

@Lumen8



Tri Pixel Panel 25

Code: ELUM085

USER MANUAL



WARNING

**FOR YOUR OWN SAFETY, PLEASE READ THIS USER MANUAL CAREFULLY
BEFORE YOUR INITIAL START-UP!**



CAUTION!

**Keep this equipment away from rain,
moisture and liquids.**



SAFETY INSTRUCTIONS

Every person involved with the installation, operation & maintenance of this equipment should:

- Be competent
- Follow the instructions of this manual



**CAUTION! TAKE CARE USING THIS EQUIPMENT!
HIGH VOLTAGE-RISK OF ELECTRIC SHOCK!!**



Before your initial start-up, please make sure that there is no damage caused during transportation. Should there be any, consult your dealer and do not use the equipment.

To maintain the equipment in good working condition and to ensure safe operation, it is necessary for the user to follow the safety instructions and warning notes written in this manual.

Please note that damages caused by user modifications to this equipment are not subject to warranty.

IMPORTANT:

The manufacturer will not accept liability for any resulting damages caused by the non-observance of this manual or any unauthorised modification to the equipment.

- Never let the power-cable come into contact with other cables. Handle the power-cable and all mains voltage connections with particular caution!
- Never remove warning or informative labels from the equipment.
- Do not open the equipment and do not modify the equipment.
- Do not connect this equipment to a dimmer-pack.
- Do not switch the equipment on and off in short intervals, as this will reduce the system's life.
- Only use the equipment indoors.
- Do not expose to flammable sources, liquids or gases.
- Cleaning must be done at regular intervals.
- Before cleaning, wait until the unit has cooled.
- Use a vacuum or dry compressed air and a soft brush to remove the dust collected on the external vents and accessible internal components.
- Clean the external surfaces with a mild solution of non-ammonia glass cleaner or isopropyl alcohol and wipe with a soft, lint free cotton cloth or lense cleaning tissue.
- Always disconnect the power from the mains when equipment is not in use or before cleaning! Only handle the power-cable by the plug. Never pull out the plug by pulling the power-cable.
- Make sure that the available voltage is between 100V-240V.
- Make sure that the power-cable is never crimped or damaged. Check the equipment and the power-cable periodically.
- If the equipment is dropped or damaged, disconnect the mains power supply immediately. Have a qualified engineer inspect the equipment before operating again.
- If the equipment has been exposed to drastic temperature fluctuation (e.g. after transportation), do not switch it on immediately. The arising condensation might damage the equipment. Leave the equipment switched off until it has reached room temperature.
- If your product fails to function correctly, discontinue use immediately. Pack the unit securely (preferably in the original packing material), and return it to your Prolight dealer for service.
- Only use fuses of same type and rating.
- Repairs, servicing and power connection must only be carried out by a qualified technician. **THIS UNIT CONTAINS NO USER SERVICEABLE PARTS.**
- **WARRANTY**; One year from date of purchase.
- eLumen8 products are designed and intended for professional use only by competent persons. The products are not suitable for domestic use.

OPERATING DETERMINATIONS

If this equipment is operated in any other way, than those described in this manual, the product may suffer damage and the warranty becomes void.

Incorrect operation may lead to danger e.g.: short-circuit, burns, electric shocks, LED failure etc.

Do not endanger your own safety and the safety of others!

Incorrect installation or use can cause serious damage to people and property.

These fixtures are not designed to be used as house lights or left on for prolonged periods.

Overview:

You should find inside the elumen8 carton the following items:

- 1, Tri Pixel Panel 25
- 2, Instruction manual,
- 3, Power Cable
- 4, Bracket & fixings

The Tri Pixel Panel 25 offers full pixel map technology within a rugged chassis featuring rigging and array options to allow lighting designers to create stunning effects. 30W COB tri-colour LEDs deliver a full spectrum of colours, and has a wide range of built-in DMX personalities to simplify integration and compatibility with a wide range of DMX consoles.

Note: The Tri Pixel Panel 25 is designed for use as a pixel mappable effect. Due to the density of high power of the LED's onboard the fixture is not intended for use at full intensity over extended periods, doing so may shorten the lifespan of the COB LEDs. To ensure effective cooling the Tri Pixel Panel 25 should be mounted in free space with 300mm or greater of clearance behind the fixture to allow for sufficient airflow and cooling.

Technical Specifications:

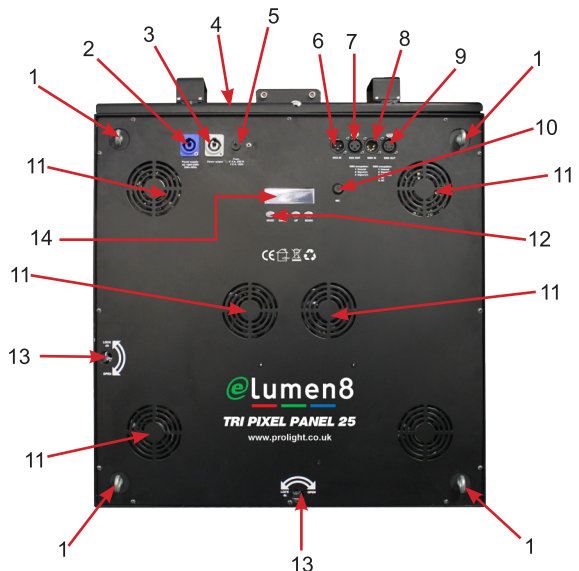
- 25 x 30W tri-colour LEDs
- Beam angle: 80 degrees
- 1100Hz refresh rate
- 0-100% dimming and variable strobe
- DMX channels: 3/5/6/25C/25W/26/75/76/78 or 100 selectable
- Sound active, auto, master/slave, built-in programmes and DMX modes
- 4 push button menu with LCD display
- Powercon in/out sockets
- 3-Pin XLR in/out sockets
- 5-pin XLR in/out sockets
- Individually addressable LEDs
- Fan cooled
- Quarter turn quick lock rigging system
- Power consumption: 780W
- Power supply: 100-240V~50Hz-60Hz
- Dimensions: 550 x 130 x 550mm
- Weight: 18.5kg

Operating modes:

- 1, Sound active
- 2, Auto
- 3, Master/slave
- 4, Built-in programmes
- 5, DMX

Identification:

- 1, Safety eyes
- 2, Power in socket
- 3, Power out socket
- 4, Flying bracket (ELUM085A)
- 5, Fuse (F4A~250V/F8A~120V)
- 6, 3-pin XLR in socket
- 7, 3-pin XLR out socket
- 8, 5-pin XLR in socket
- 9, 5-pin XLR out socket
- 10, Microphone
- 11, Cooling fan
- 12, Function buttons
- 13, Coffin locks
- 14, LCD display



Operation modes:

Sound Active mode:

To activate the unit in sound active mode, press the “**MODE**” button to show “**SOUND MODE**” on the LCD screen. Now press the “**SET UP**” button to select the desired sensitivity level by using the “**UP**” and “**DOWN**” buttons. Press the “**SET UP**” button again to select the frequency level and adjust by using the “**UP**” and “**DOWN**” buttons.

“**SENS**” 00 - 31 (00 = low, 31 = high)

“**FQN**” 01-99 (01 = low, 99 = high)

Auto run mode:

To activate the unit in auto run mode, press the “**MODE**” button to show “**AUTO RUN**” on the LCD screen. Now press the “**SET UP**” button to select the desired frequency level by using the “**UP**” and “**DOWN**” buttons.

“**FQN**” 01-99 (01 = low, 99 = high)

Note: In this mode, it will run 14 built-in programmes in a continuous loop.

Slave mode:

To activate the unit in slave mode, first you must link multiple units together and press the “**MODE**” button to show “**SLAVE MODE**” on the LCD screen. Now on the master unit press the “**MODE**” button to select the desired mode and the slave units will now run in sequence with the master unit.

Built-in programmes:

To activate the units built-in programmes, press the “**MODE**” button to show “**01.STATIC**” on the LCD screen. Press the “**SET UP**” button to choose between the 14 built-in programmes by using the “**UP**” and “**DOWN**” buttons. Now press the “**SET UP**” button to select the desired speed and adjust by using the “**UP**” and “**DOWN**” buttons. Press the “**SET UP**” button once more to select the desired flash value and adjust by using the “**UP**” and “**DOWN**” buttons.

Speed values: 00 - 99 (00 = slow, 99 = fast)

Flash values: 00 - 99 (00 = slow, 99 = fast)

For the 14 built-in programmes please see page 5.

DMX mode:

To activate the unit in DMX mode, press the “**MODE**” button to show “**DMX MODE**” on the LCD screen. Press the “**SET UP**” button and select the desired DMX address setting by using the “**UP**” and “**DOWN**” buttons. Then to select one of the DMX modes 3/5/6/25C/25W/26/75/76/78 or 100 channel, press the “**SET UP**” button again to choose the desired DMX mode by using the “**UP**” and “**DOWN**” buttons.

For the 3/5/6/25C/25W/26/75/76/78 or 100 channel DMX address information please see pages overleaf.

14 Built-in programme chart:

Static colour BLAC-RGB Flash 00-99	Blackout, red, yellow, green, cyan, blue, purple, white Flash speed adjustable
Dream Speed 00-99 Flash 00-99	7 colour dreaming Speed & flash adjustable
Meteor Speed 00-99 Flash 00-99	7 colour flow Speed & flash adjustable
Fade Speed 00-99 Flash 00-99	7 colour fade Speed & flash adjustable
Change Speed 00-99 Flash 00-99	7 colour change Speed & flash adjustable
Flow 1 Speed 00-99 Flash 00-99	7 colour chase Speed & flash adjustable
Flow 2 Speed 00-99 Flash 00-99	7 colour chase Speed & flash adjustable
Flow 3 Speed 00-99 Flash 00-99	7 colour chase Speed & flash adjustable
Flow 4 Speed 00-99 Flash 00-99	7 colour chase Speed & flash adjustable
Flow 5 Speed 00-99 Flash 00-99	7 colour chase Speed & flash adjustable
Flow 6 Speed 00-99 Flash 00-99	7 colour chase Speed & flash adjustable
Flow 7 Speed 00-99 Flash 00-99	7 colour chase Speed & flash adjustable
Flow 8 C1: RGB C2: RGB	7 colour chase Speed & flash adjustable
Flow 9 C1: RGB C2: RGB	7 colour chase Speed & flash adjustable

3 channel mode DMX chart:

Channel	Value	Functions
1	0-255	Red 0-100%
2	0-255	Green 0-100%
3	0-255	Blue 0-100%

5 channel mode DMX chart

Channel	Value	Functions
1	0-255	Red 0-100%
2	0-255	Green 0-100%
3	0-255	Blue 0-100%
4	0-255	Master dimmer 0-100%
5	0	No function
	1-5	Sound active (7 colours)
	6-10	No function
	11-255	Strobe (slow to fast)



6 channel mode DMX chart:

Channel	Value	Function
1	0-255	Master dimmer 0-100%
2	0-149 150-255	Static Pattern Moving Pattern slow to fast
3	0-149	Patern selector
4	0-99	Letters A-Z
	100-199	Numbrs 1-9
	200-255	Patterns
5	0-255	Pattern colour selector
6	0-255	Background colour selector

25C channel mode DMX chart (Cool white):

Channel	Value	Function
1	0-255	Cell 1 0-100%
2	0-255	Cell 2 0-100%
3	0-255	Cell 3 0-100%
4	0-255	Cell 4 0-100%
5	0-255	Cell 5 0-100%
6	0-255	Cell 6 0-100%
7	0-255	Cell 7 0-100%
8	0-255	Cell 8 0-100%
9	0-255	Cell 9 0-100%
10	0-255	Cell 10 0-100%
11	0-255	Cell 11 0-100%
12	0-255	Cell 12 0-100%
13	0-255	Cell 13 0-100%
14	0-255	Cell 14 0-100%
15	0-255	Cell 15 0-100%
16	0-255	Cell 16 0-100%
17	0-255	Cell 17 0-100%
18	0-255	Cell 18 0-100%
19	0-255	Cell 19 0-100%
20	0-255	Cell 20 0-100%
21	0-255	Cell 21 0-100%
22	0-255	Cell 22 0-100%
23	0-255	Cell 23 0-100%
24	0-255	Cell 24 0-100%
25	0-255	Cell 25 0-100%

25W channel mode DMX chart (Warm white):

Channel	Value	Function
1	0-255	Cell 1 0-100%
2	0-255	Cell 2 0-100%
3	0-255	Cell 3 0-100%
4	0-255	Cell 4 0-100%
5	0-255	Cell 5 0-100%
6	0-255	Cell 6 0-100%
7	0-255	Cell 7 0-100%
8	0-255	Cell 8 0-100%
9	0-255	Cell 9 0-100%
10	0-255	Cell 10 0-100%
11	0-255	Cell 11 0-100%
12	0-255	Cell 12 0-100%
13	0-255	Cell 13 0-100%
14	0-255	Cell 14 0-100%
15	0-255	Cell 15 0-100%
16	0-255	Cell 16 0-100%
17	0-255	Cell 17 0-100%
18	0-255	Cell 18 0-100%
19	0-255	Cell 19 0-100%
20	0-255	Cell 20 0-100%
21	0-255	Cell 21 0-100%
22	0-255	Cell 22 0-100%
23	0-255	Cell 23 0-100%
24	0-255	Cell 24 0-100%
25	0-255	Cell 25 0-100%

26 channel mode DMX chart:

Channel	Value	Function
1	0-255	Cell 1 0-100%
2	0-255	Cell 2 0-100%
3	0-255	Cell 3 0-100%
4	0-255	Cell 4 0-100%
5	0-255	Cell 5 0-100%
6	0-255	Cell 6 0-100%
7	0-255	Cell 7 0-100%
8	0-255	Cell 8 0-100%
9	0-255	Cell 9 0-100%
10	0-255	Cell 10 0-100%
11	0-255	Cell 11 0-100%
12	0-255	Cell 12 0-100%
13	0-255	Cell 13 0-100%
14	0-255	Cell 14 0-100%
15	0-255	Cell 15 0-100%
16	0-255	Cell 16 0-100%
17	0-255	Cell 17 0-100%
18	0-255	Cell 18 0-100%
19	0-255	Cell 19 0-100%
20	0-255	Cell 20 0-100%
21	0-255	Cell 21 0-100%
22	0-255	Cell 22 0-100%
23	0-255	Cell 23 0-100%
24	0-255	Cell 24 0-100%
25	0-255	Cell 25 0-100%
26	0-25	Red
	26-50	Blue
	51-75	Green
	76-100	Yellow
	101-125	Pink
	126-150	Purple
	151-175	Cool white
	176-200	Warm white
	201-225	Colour fade (slow to fast)
	226-255	Colour change (Slow to fast)

75 channel mode DMX chart

CH1	CH2	CH3	CH4	CH5	CH6	CH7	CH8	CH9	CH10	CH11	CH12
R1 0-100%	G1 0-100%	B1 0-100%	R2 0-100%	G2 0-100%	B2 0-100%	R3 0-100%	G3 0-100%	B3 0-100%	R4 0-100%	G4 0-100%	B4 0-100%

CH13	CH14	CH15	CH16	CH17	CH18	CH19	CH20	CH21	CH22	CH23	CH24
R5 0-100%	G5 0-100%	B5 0-100%	R6 0-100%	G6 0-100%	B6 0-100%	R7 0-100%	G7 0-100%	B7 0-100%	R8 0-100%	G8 0-100%	B8 0-100%

CH25	CH26	CH27	CH28	CH29	CH30	CH31	CH32	CH33	CH34	CH35	CH36
R9 0-100%	G9 0-100%	B9 0-100%	R10 0-100%	G10 0-100%	B10 0-100%	R11 0-100%	G11 0-100%	B11 0-100%	R12 0-100%	G12 0-100%	B12 0-100%

CH37	CH38	CH39	CH40	CH41	CH42	CH43	CH44	CH45	CH46	CH47	CH48
R13 0-100%	G13 0-100%	B13 0-100%	R14 0-100%	G14 0-100%	B14 0-100%	R15 0-100%	G15 0-100%	B15 0-100%	R16 0-100%	G16 0-100%	B16 0-100%

CH49	CH50	CH51	CH52	CH53	CH54	CH55	CH56	CH57	CH58	CH59	CH60
R17 0-100%	G17 0-100%	B17 0-100%	R18 0-100%	G18 0-100%	B18 0-100%	R19 0-100%	G19 0-100%	B19 0-100%	R20 0-100%	G20 0-100%	B20 0-100%

CH61	CH62	CH63	CH64	CH65	CH66	CH67	CH68	CH69	CH70	CH71	CH72
R21 0-100%	G21 0-100%	B21 0-100%	R22 0-100%	G22 0-100%	B22 0-100%	R23 0-100%	G23 0-100%	B23 0-100%	R24 0-100%	G24 0-100%	B24 0-100%

CH73	CH74	CH75
R25 0-100%	G25 0-100%	B25 0-100%



76 channel mode DMX chart

CH1	CH2	CH3	CH4	CH5	CH6	CH7	CH8	CH9	CH10	CH11	CH12
R1 0-100%	G1 0-100%	B1 0-100%	R2 0-100%	G2 0-100%	B2 0-100%	R3 0-100%	G3 0-100%	B3 0-100%	R4 0-100%	G4 0-100%	B4 0-100%

CH13	CH14	CH15	CH16	CH17	CH18	CH19	CH20	CH21	CH22	CH23	CH24
R5 0-100%	G5 0-100%	B5 0-100%	R6 0-100%	G6 0-100%	B6 0-100%	R7 0-100%	G7 0-100%	B7 0-100%	R8 0-100%	G8 0-100%	B8 0-100%

CH25	CH26	CH27	CH28	CH29	CH30	CH31	CH32	CH33	CH34	CH35	CH36
R9 0-100%	G9 0-100%	B9 0-100%	R10 0-100%	G10 0-100%	B10 0-100%	R11 0-100%	G11 0-100%	B11 0-100%	R12 0-100%	G12 0-100%	B12 0-100%

CH37	CH38	CH39	CH40	CH41	CH42	CH43	CH44	CH45	CH46	CH47	CH48
R13 0-100%	G13 0-100%	B13 0-100%	R14 0-100%	G14 0-100%	B14 0-100%	R15 0-100%	G15 0-100%	B15 0-100%	R16 0-100%	G16 0-100%	B16 0-100%

CH49	CH50	CH51	CH52	CH53	CH54	CH55	CH56	CH57	CH58	CH59	CH60
R17 0-100%	G17 0-100%	B17 0-100%	R18 0-100%	G18 0-100%	B18 0-100%	R19 0-100%	G19 0-100%	B19 0-100%	R20 0-100%	G20 0-100%	B20 0-100%

CH61	CH62	CH63	CH64	CH65	CH66	CH67	CH68	CH69	CH70	CH71	CH72
R21 0-100%	G21 0-100%	B21 0-100%	R22 0-100%	G22 0-100%	B22 0-100%	R23 0-100%	G23 0-100%	B23 0-100%	R24 0-100%	G24 0-100%	B24 0-100%

CH73	CH74	CH75	CH76
R25 0-100%	G25 0-100%	B25 0-100%	Master Dimmer 0-100%



78 channel mode DMX chart:

CH1	CH2	CH3	CH4	CH5	CH6	...CH78
0-15	Master Dimmer	Flash 0-255 slow to fast	Red 1 0-255	Green 1 0-255	Blue 1 0-255	...Blue 25 0-255
16-23 R	Dimmer 0-100%					
24-31 G						
32-39 B						
40-47 RG						
48-55 GB						
56-63 RB						
64-71 RGB						
72-79 Colour 1						
80-87 Colour 2						
88-95 Colour 3						
96-103 Colour 4						
104-111 Colour 5						
112-119 Colour 6						
120-127 Colour 7						
128-135 Colour 8						
136-143 Dream						
144-151 Meteor						
152-159 Fade						
160-167 Change						
168-175 Flow 1						
176-183 Flow 2						
184-191 Flow 3						
192-199 Flow 4						
200-207 Flow 5						
208-215 Flow 6						
216-223 Flow 7						
224-231 Flow 8						
232-239 Flow 9						
240-255 Sound	Sensitivity 0-255					



100 channel mode DMX chart:

CH1	CH2	CH3	CH4	CH5	CH6	CH7	CH8	CH9	CH10	CH11	CH12
R1 0-100%	G1 0-100%	B1 0-100%	Dimmer 1 0-100%	R2 0-100%	G2 0-100%	B2 0-100%	Dimmer 2 0-100%	R3 0-100%	G3 0-100%	B3 0-100%	Dimmer 3 0-100%

CH13	CH14	CH15	CH16	CH17	CH18	CH19	CH20	CH21	CH22	CH23	CH24
R4 0-100%	G4 0-100%	B4 0-100%	Dimmer 4 0-100%	R5 0-100%	G5 0-100%	B5 0-100%	Dimmer 5 0-100%	R6 0-100%	G6 0-100%	B6 0-100%	Dimmer 6 0-100%

CH25	CH26	CH27	CH28	CH29	CH30	CH31	CH32	CH33	CH34	CH35	CH36
R7 0-100%	G7 0-100%	B7 0-100%	Dimmer 7 0-100%	R8 0-100%	G8 0-100%	B8 0-100%	Dimmer 8 0-100%	R9 0-100%	G9 0-100%	B9 0-100%	Dimmer 9 0-100%

CH37	CH38	CH39	CH40	CH41	CH42	CH43	CH44	CH45	CH46	CH47	CH48
R10 0-100%	G10 0-100%	B10 0-100%	Dimmer 10 0-100%	R11 0-100%	G11 0-100%	B11 0-100%	Dimmer 11 0-100%	R12 0-100%	G12 0-100%	B12 0-100%	Dimmer 12 0-100%

100 channel mode DMX chart cont.....:

CH49	CH50	CH51	CH52	CH53	CH54	CH55	CH56	CH57	CH58	CH59	CH60
R13 0-100%	G13 0-100%	B13 0-100%	Dimmer 13 0-100%	R14 0-100%	G14 0-100%	B14 0-100%	Dimmer 14 0-100%	R15 0-100%	G15 0-100%	B15 0-100%	Dimmer 15 0-100%

CH61	CH62	CH63	CH64	CH65	CH66	CH67	CH68	CH69	CH70	CH71	CH72
R16 0-100%	G16 0-100%	B16 0-100%	Dimmer 16 0-100%	R17 0-100%	G17 0-100%	B17 0-100%	Dimmer 17 0-100%	R18 0-100%	G18 0-100%	B18 0-100%	Dimmer 18 0-100%

CH73	CH74	CH75	CH76	CH77	CH78	CH79	CH80	CH81	CH82	CH83	CH84
R19 0-100%	G19 0-100%	B19 0-100%	Dimmer 19 0-100%	R20 0-100%	G20 0-100%	B20 0-100%	Dimmer 20 0-100%	R21 0-100%	G21 0-100%	B21 0-100%	Dimmer 21 0-100%

CH85	CH86	CH87	CH88	CH89	CH90	CH91	CH92	CH93	CH94	CH95	CH96
R22 0-100%	G22 0-100%	B22 0-100%	Dimmer 22 0-100%	R23 0-100%	G23 0-100%	B23 0-100%	Dimmer 23 0-100%	R24 0-100%	G24 0-100%	B24 0-100%	Dimmer 24 0-100%

CH97	CH98	CH99	CH100
R25 0-100%	G25 0-100%	B25 0-100%	Dimmer 25 0-100%

Rigging:

NOTE: The installation of this unit must be carried out by qualified service personal only. Improper installation can result in serious injuries and/or damage to the property. Overhead rigging requires extensive experience! Working load limits should be respected, certified installation materials should be used and the installed unit should be inspected regular intervals for safety.

Before rigging overhead:

Make sure the area below the installation place is free from unwanted persons during rigging, de - rigging and servicing.

Locate the fixture in a well ventilated spot, far away from any flammable materials and/or liquids.

The fixture must be fixed at least 50cm from surrounding walls.

The device should be installed out of reach of people and outside areas where persons may walk by or be seated.

Before rigging make sure that the installation area can hold a minimum point load of 10 times the device's weight.

Always use a certified safety cable that can hold 12 times the weight of the device when installing the unit. This secondary safety attachment should be installed in a way that no part of the installation can drop more than 20cm if the main attachment fails.

The device should be well fixed; a free-swinging mounting is dangerous and should not be used.

Don't cover any ventilation openings as this may result in overheating.

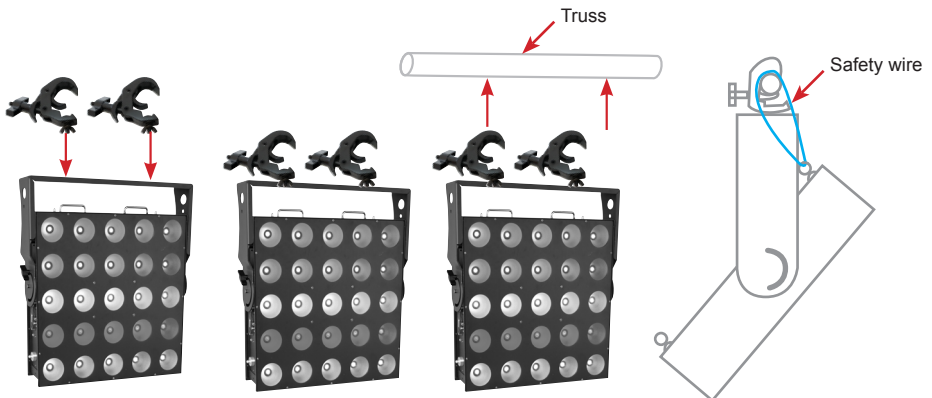
Rigging with supplied hanging Bracket:

The supplied hanging bracket can be used to place the unit on the floor and point it in a desired direction. In this case a proper and stable base should be used!

The hanging bracket can also be used to hang the unit on truss and point it in the desired direction:

Fix 2 suitable truss clamps to the holes in the hanging bracket. Make sure that both clamps are firmly fixed to the bracket tight and secure!

Fix 1 or 2 suitable safety cable(s) to the safety eyes to make sure the unit cannot drop more than 20cm if the hanging bracket or clamps fail.



NOTE: Using the supplied hanging bracket you CANNOT fix more than one unit together. If you want to hang an array of units, you must use the optional heavy Tri Pixel Panel 25 Flying bracket (ELUM085A).

Rigging with optional Flying Bracket (ELUM085A):



This flying bracket is used for hanging arrays of the Tri Pixel Panel 25.

To attach the flying bracket, first you must remove the supplied hanging bracket from the unit. To do this simply unscrew the tightening knobs on the side of the unit and slide off.

On the top of the flying bracket there is 2 clamp points (M12). Please use these to attach suitable clamps before fitting to the unit.

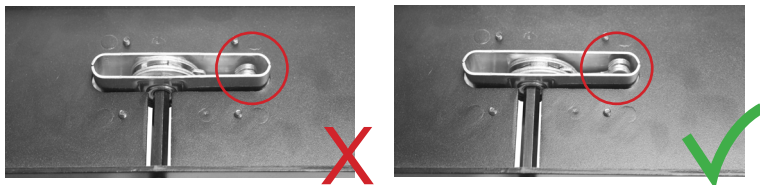
Place the flying bracket on top of the unit making sure that both carry handles are folded flat. Line up the bracket with the steel locating pins.

Now using a size 8 allen key turn the coffin lock and turn anti clockwise until you hear it lock into position. Make sure that you hear a click and cannot turn the lock any more.

Fix 2 suitable safety cable(s) to the safety eyes to make sure the unit cannot drop more than 20cm if the hanging bracket or clamps fail.



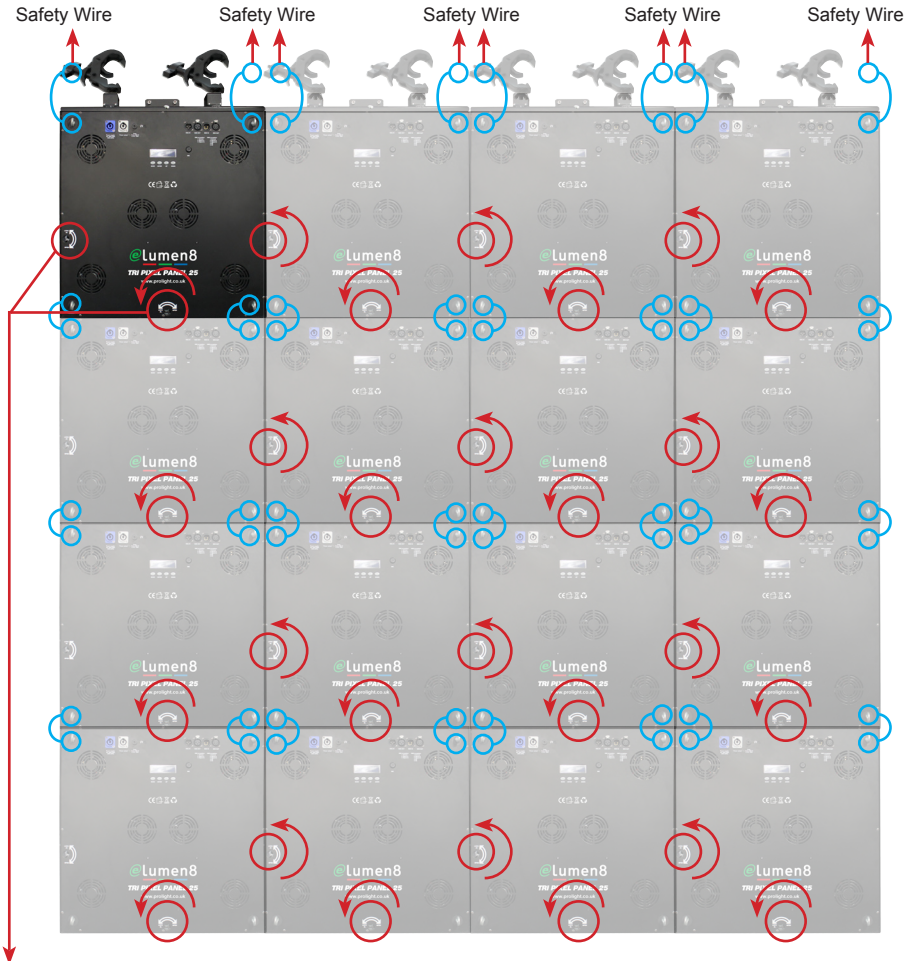
If you cannot lock the bracket as described please check that it is in the correct position before attempting to join the units. Turn the lock clockwise until the pin is in the correct position see below.



Multi array set up:

Once the flying bracket has been fixed to the unit securely, you can add a maximum of 4 units horizontally for the array and vertically you can fix as many columns as you like, each column must feature an array bracket at the top.

NOTE: Please be sure that each unit is fixed together properly using the coffin locks on the left side and bottom side of the unit following the same method for the flying bracket.



When the units are lined up against each other use a size 8 allen key to turn the coffin lock, turn the coffin lock anti clockwise until you hear it lock into position. Make sure that you hear a click and cannot turn the lock any more.



RDM functions and remote setup:

RDM means "Remote Device Management". The Tri Pixel Panel 25 works with a brief set of RDM functions that means it can setup a bidirectional communication with an RDM compatible DMX controller. See below for a brief of some of these functions, more will be added in the future:

- The DMX controller will send out a "discovery command", the RDM unit/s respond and send their unique unit ID.
- The DMX controller asks each RDM unit for basic data so it knows which unit/s are connected.

The Elumen8 Tri Pixel Panel 25 will show;

- Unit name: Tri Pixel Panel 25
- Manufacturer: Elumen8
- Category: LED Dimmer
- Firmware: XXXX (version of the software of the unit)
- DMX address: XXX (current DMX start address of the unit)
- DMX footprint: XX (current number of DMX channels used by the unit)
- Personality: XX (current working DMX mode/personality of the unit)

The DMX controller can send certain commands to each to each RDM unit which allows remote setup of the units.

The following functions can be managed remotely:

- DMX start address: The DMX start address can be set remotely from 001 to 512
- DMX personality: Set the DMX personality/mode remotely.

The two above functions make it possible to prepare a complete DMX patch of all units on the DMX controller and sends this data to all of the units at once.

DMX-512:

- DMX (Digital Multiplex) is a universal protocol used as a form of communication between intelligent fixtures and controllers. A DMX controller sends DMX data instructions from the controller to the fixture. DMX data is sent as serial data that travels from fixture to fixture via the DATA "IN" and DATA "OUT" XLR terminals located on all DMX fixtures (most controllers only have a data "out" terminal).

DMX Linking:

- DMX is a language allowing all makes and models of different manufactures to be linked together and operate from a single controller, as long as all fixtures and the controller are DMX compliant. To ensure proper DMX data transmission, when using several DMX fixtures try to use the shortest cable path possible. The order in which fixtures are connected in a DMX line does not influence the DMX addressing. For example; a fixture assigned to a DMX address of 1 may be placed anywhere in a DMX line, at the beginning, at the end, or anywhere in the middle. When a fixture is assigned a DMX address of 1, the DMX controller knows to send DATA assigned to address 1 to that unit, no matter where it is located in the DMX chain.

DATA Cable (DMX cable) requirements (for DMX operation):

- The Tri Pixel Panel 25 can be controlled via DMX-512 protocol. The DMX address is set on the back of the unit. Your unit and your DMX controller require a standard 3 or 5-pin XLR connector for data input/output (figure 1).

Figure 1



Also remember that DMX cable must be daisy chained and cannot be split.

Notice:

• Be sure to follow figures 2 & 3 when making your own cables. Do not connect the cable's shield conductor to the ground lug or allow the shield conductor to come in contact with the XLR's outer casing. Grounding the shield could cause a short circuit and erratic behaviour.

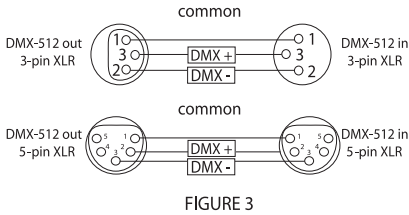


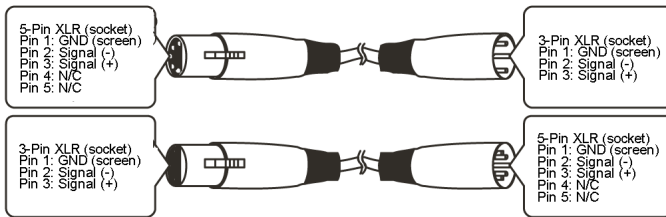
FIGURE 3

XLR Pin Configuration	XLR Pin Configuration
Pin 1 = Ground	Pin 1 = Ground
Pin 2 = Negative	Pin 2 = Negative
Pin 3 = Postive	Pin 3 = Postive
	Pin 4 = Not used
	Pin 5 = Not used

FIGURE 2

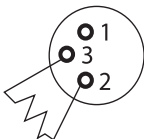
5-Pin XLR DMX Connectors:

- Some manufactures use 5-pin XLR connectors for data transmission in place of 3-pin. 5-Pin XLR fixtures may be implemented in a 3-pin XLR DMX line. When inserting standard 5-pin XLR connectors in to a 3-pin line a cable adaptor must be used. The Chart below details the correct cable conversion.



Special Note: Line termination:

- When longer runs of cable are used, you may need to use a terminator on the last unit to avoid erratic behaviour.

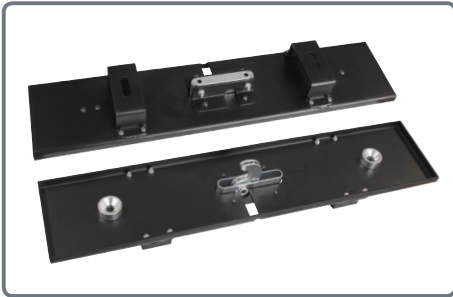


Termination reduces signal transmission problems and interference. it is always advisable to connect a DMX terminal, (resistance 120 Ohm 1/4 W) between pin 2 (DMX-) and pin 3 (DMX+) of the last fixture.

Using a cable terminator CABL90 (3-pin) or CABL89 (5-pin) will decrease the possibilities of erratic behaviour.



Please contact your local retailer to purchase these accessories.



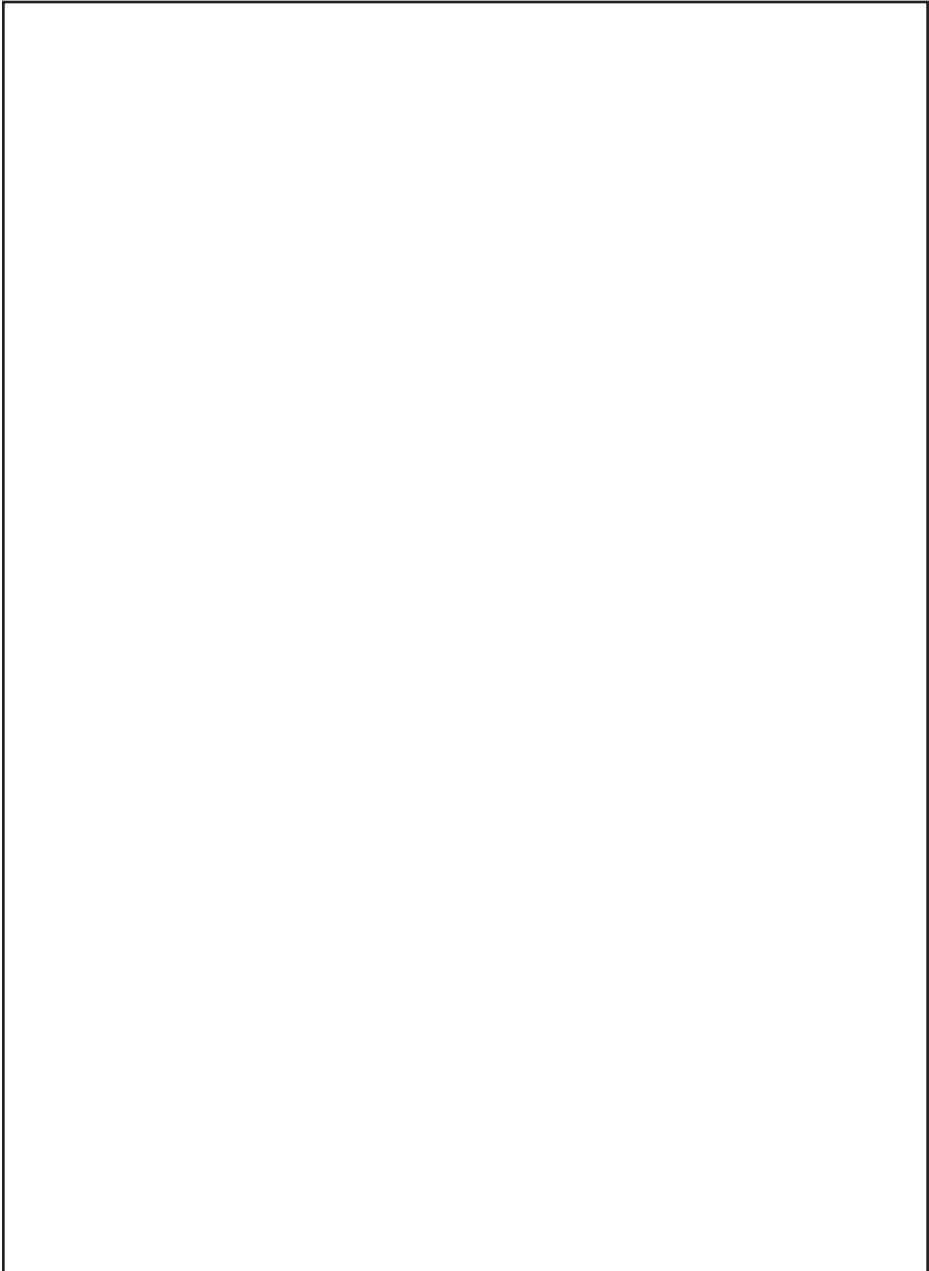
Flying Brackets
Order code: ELUM085A



Optional Case (Holds 6 x fixtures)
Order code: ELUM085B

To keep up-to-date on the latest accessories and product range additions please visit www.prolight.co.uk

Notes:



English



***Correct Disposal of This Product
(Waste Electrical & Electronic Equipment)***

(Applicable in the European Union and other European countries with separate collection systems)

This marking shown on the product or its literature, indicates that it should not be disposed with other household wastes at the end of its working life. To prevent possible harm to the environment or human health from uncontrolled waste disposal, please separate this from other types of wastes and recycle it responsibly to promote the sustainable reuse of material resources.

Household users should contact either the retailer where they purchased this product, or their local government office, for details of where and how they can take this item for environmentally safe recycling.

Business users should contact their supplier and check the terms and conditions of the purchase contract. This product should not be mixed with other commercial wastes for disposal.







www.prolight.co.uk