

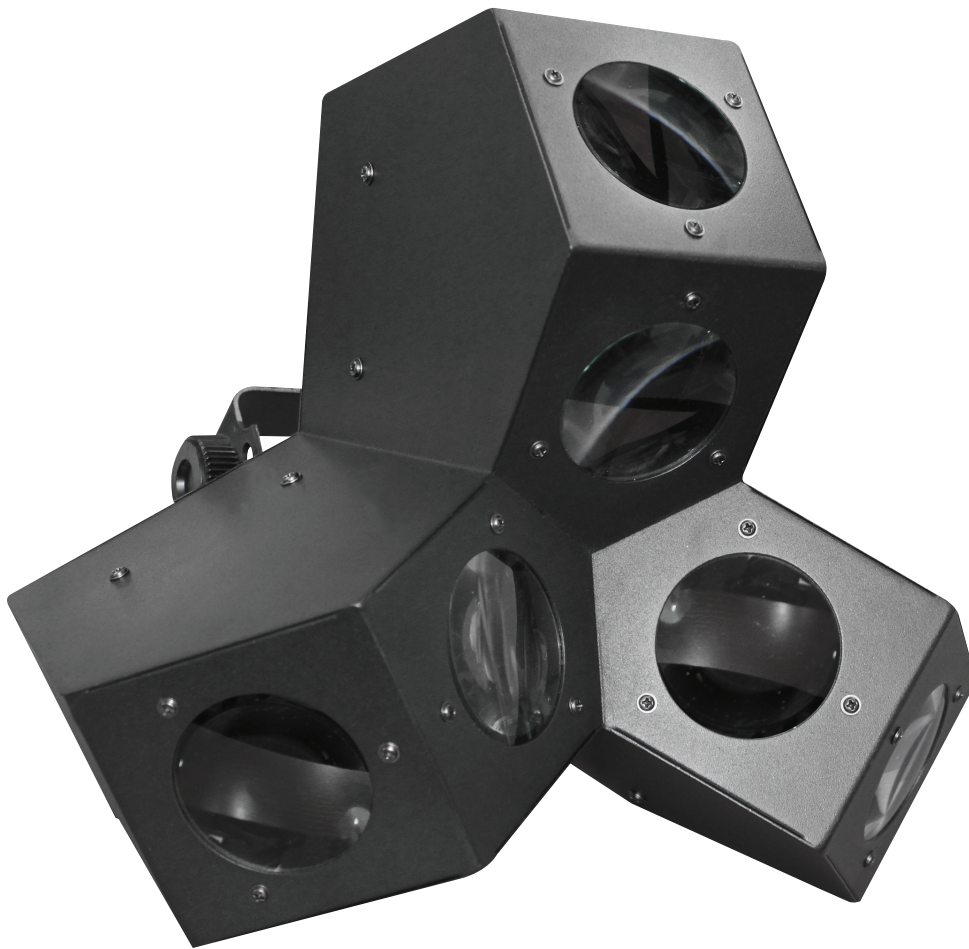
EQUIN X

www.prolight.co.uk

SIX SHOOTER

Order code: EQLED76



User manual

WARNING

**FOR YOUR OWN SAFETY, PLEASE READ THIS USER MANUAL CAREFULLY
BEFORE YOUR INITIAL START-UP!**

**CAUTION!**

**Keep this equipment away from rain,
moisture and liquids.**

**SAFETY INSTRUCTIONS**

Every person involved with the installation, operation & maintenance of this equipment should:

- Be competent
- Follow the instructions of this manual



**CAUTION! TAKE CARE USING THIS EQUIPMENT!
HIGH VOLTAGE-RISK OF ELECTRIC SHOCK!!**



Before your initial start-up, please make sure that there is no damage caused during transportation. Should there be any, consult your dealer and do not use the equipment.

To maintain the equipment in good working condition and to ensure safe operation, it is necessary for the user to follow the safety instructions and warning notes written in this manual.

Please note that damages caused by user modifications to this equipment are not subject to warranty.

IMPORTANT:

The manufacturer will not accept liability for any resulting damages caused by the non-observance of this manual or any unauthorised modification to the equipment.

- Never let the power-cable come into contact with other cables. Handle the power-cable and all mains voltage connections with particular caution!
- Never remove warning or informative labels from the equipment.
- Do not open the equipment and do not modify the equipment.
- Do not connect this equipment to a dimmer-pack.
- Do not switch the equipment on and off in short intervals, as this will reduce the system's life.
- Only use the equipment indoors.
- Do not expose to flammable sources, liquids or gases.
- Always disconnect the power from the mains when equipment is not in use or before cleaning! Only handle the power-cable by the plug. Never pull out the plug by pulling the power-cable.
- Make sure that the available voltage is between 100V-240V.
- Make sure that the power-cable is never crimped or damaged. Check the equipment and the power-cable periodically.
- If the equipment is dropped or damaged, disconnect the mains power supply immediately. Have a qualified engineer inspect the equipment before operating again.
- If the equipment has been exposed to drastic temperature fluctuation (e.g. after transportation), do not switch it on immediately. The arising condensation might damage the equipment. Leave the equipment switched off until it has reached room temperature.
- If your product fails to function correctly, discontinue use immediately. Pack the unit securely (preferably in the original packing material), and return it to your Prolight dealer for service.
- Only use fuses of same type and rating.
- Repairs, servicing and power connection must only be carried out by a qualified technician. THIS UNIT CONTAINS NO USER SERVICEABLE PARTS.
- WARRANTY; One year from date of purchase.

OPERATING DETERMINATIONS

If this equipment is operated in any other way, than those described in this manual, the product may suffer damage and the warranty becomes void.

Incorrect operation may lead to danger e.g.: short-circuit, burns, electric shocks, LED failure etc.

Do not endanger your own safety and the safety of others!
Incorrect installation or use can cause serious damage to people and property.

You should find inside the Equinox carton the following items:

1, Equinox Six Shooter

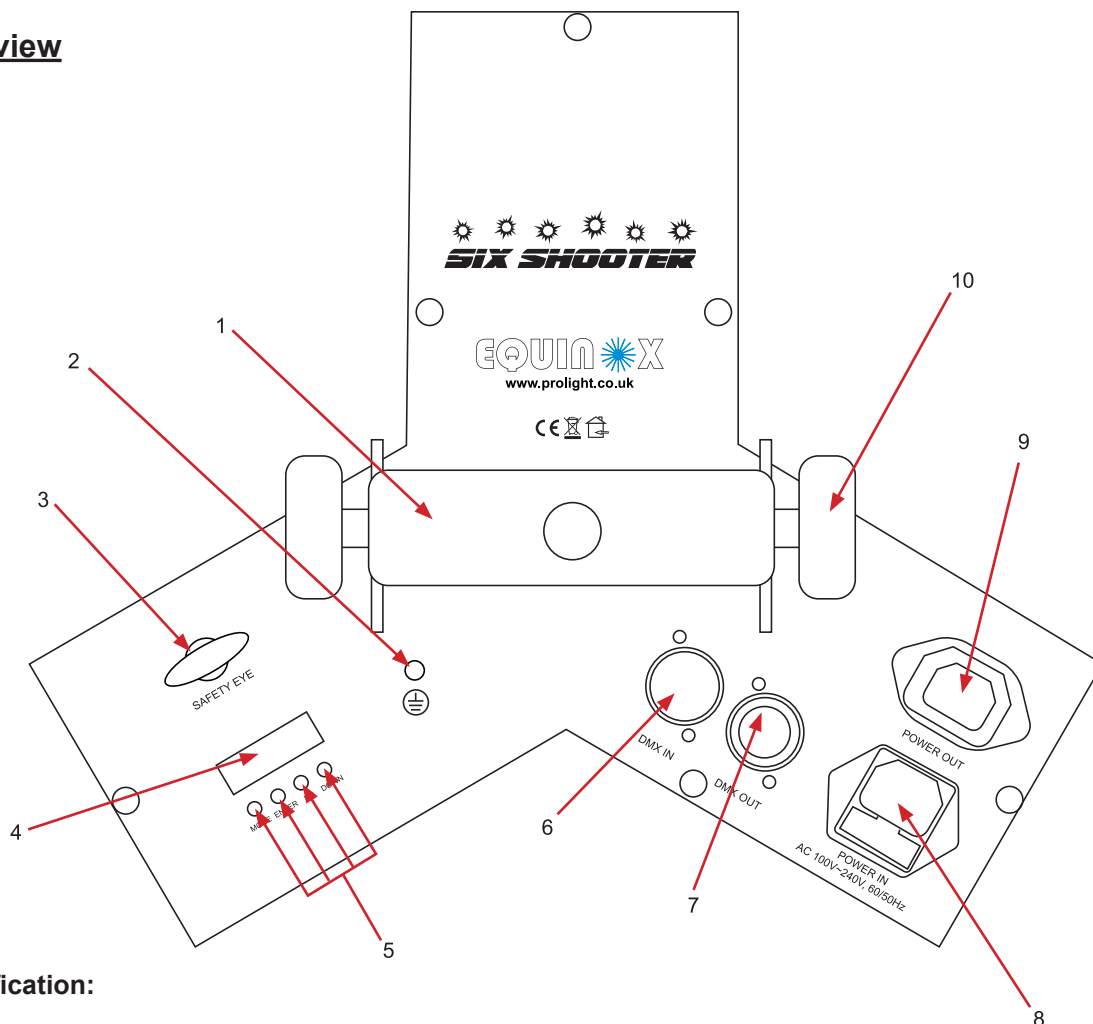
2, Power cable

3, Instruction manual

Technical Specifications:

- DMX channels: 1 or 3 selectable
- Sound Active, auto, DMX and master/slave modes
- 18 x 3W LEDs (R:6, G: 6, B: 6)
- Built-in programmes and microphone
- 4 push button menu with LED display
- Power consumption: 57W
- Power supply: 100-240V, 60/50Hz
- Dimensions: 370 x 320 x 295mm
- Weight: 4.1kg

Overview



Identification:

1. Hanging bracket
2. Earth screw
3. Safety eye
4. LED display
5. Function buttons
6. DMX input socket
7. DMX output socket
8. IEC power in socket
9. IEC power out socket
10. Hanging bracket tightening knobs

Operations modes:**DMX mode:**

To access the DMX mode, press the “**MODE**” button on the rear of the unit to show *5 12* on the LED display. Now press the “**ENTER**” button and use the “**UP**” and “**DOWN**” buttons to set the desired DMX address from *d.00 1~ d.5 12*, and press the “**ENTER**” button to confirm the setting.

DMX channel mode:

To access the DMX channel mode, press the “**MODE**” button on the rear of the unit to show *5 12* on the LED display. Then press the “**ENTER**” button and use the “**UP**” and “**DOWN**” buttons to set the desired DMX address from *d.00 1~ d.5 12*. Now press the “**ENTER**” button to choose one of the 1 or 3 DMX channel modes use the “**UP**” and “**DOWN**” buttons, and press the “**ENTER**” button to confirm the setting.

1 Channel mode:

Channel	Value	Function
1	0-7	No function (Blackout)
	8-67	Show (Program 1)
	68-127	Show (Program 2)
	128-187	Show (Program 3) - Slow motion mode
	188-247	Sound active (188 = Low sensitivity, 247 = High sensitivity)
	248-255	Random shows

3 Channel mode:

Channel	Value	Function
1	0	No function
	1-10	Programme 1
	11-21	Programme 2
	22-32	Programme 3
	33-43	Programme 4
	44-54	Programme 5
	55-65	Programme 6
	66-76	Programme 7
	77-87	Programme 8
	88-98	Programme 9
	99-109	Programme 10
	110-120	Programme 11
	121-131	Programme 12
	132-142	Programme 13
	143-153	Programme 14
	154-164	Programme 15
	165-175	Programme 16
	176-177	Programme 17
178-188	Programme 18	
189-255	Sound active	
2	0-255	Speed (slow to fast)/Sensitivity (low to high)
3	0-255	Strobe (slow to fast)

To exit out of any of the above options, press the “**MODE**” button.

Master/slave mode

To access the master/slave mode, press the “**MODE**” button on the rear of the unit to show *SLAVE* on the LED display and press the “**ENTER**” button to confirm the setting. The unit will now run in sequence with the master unit.

Please ensure that all slave units are set to the same DMX channel mode as the master unit.

Sound active mode:

To access the sound active mode, press the “**MODE**” button on the rear of the unit to show *SOUND* on the LED display. Now press the “**ENTER**” button and use the “**UP**” and “**DOWN**” buttons to set the sound sensitivity level from *SU00*~*SU31* and press the “**ENTER**” button to confirm the setting.

Note: SU00 = Low, SU31 = High

To exit out of any of the above options, press the “**MODE**” button.

Auto run mode

To select auto run mode, press the “**MODE**” button to show *AUTO* on the LED display.

To choose how many times the programme is repeated before moving on to the next, press the “**ENTER**” button and use the “**UP**” and “**DOWN**” buttons to choose the number of repeats required from *n001* to *n100*. Now press the “**ENTER**” button to show *SP01* and use the “**UP**” and “**DOWN**” buttons to increase or decrease the speed from *SP01* to *SP99*. To add strobe, press the “**ENTER**” button to show *F500* and use the “**UP**” and “**DOWN**” buttons to increase or decrease the value from *F501* to *F599*.

Note: Values 00 = Slow, 99 = Fast

Press the “**ENTER**” button to confirm the setting.

To exit out of any of the above options, press the “**MODE**” button.

Built-in programmes mode

To select built-in programmes mode, press the “**MODE**” button to show *PROG* on the LED display and use the “**UP**” and “**DOWN**” buttons to select programmes *PROG* to *PR18*.

Now press the “**ENTER**” button and use the “**UP**” and “**DOWN**” buttons to set the programme speed from *SP01* to *SP99*. Now press the “**ENTER**” button and use the “**UP**” and “**DOWN**” buttons to set the strobe speed from *F500* to *F599*.

Note: Values 00 = Slow, 99 = Fast

Press the “**ENTER**” button to confirm the setting.

To exit out of any of the above options, press the “**MODE**” button.

LED display mode

To select LED display mode, press the “**MODE**” button to show *LED* on the LED display. Now press the “**ENTER**” button and use the “**UP**” and “**DOWN**” buttons to select between ON or OFF. Press the “**ENTER**” button to confirm the setting. To exit out of any of the above options, press the “**MODE**” button.

Note: ON = The LED display will stay on constantly, OFF = After the menu has not been used after 20 seconds the display will blackout. To turn the display back on simply press any one of the function buttons.

Version mode

To select the version mode, press the “**MODE**” button to show *VER* on the LED display. Now press the “**ENTER**” button to see the current version of the built-in software.

Press the “**ENTER**” button to confirm the setting.

To exit out of any of the above options, press the “**MODE**” button.

Display mode

To select display mode, press the “**MODE**” button to show *DISP* on the LED display. Now press the “**ENTER**” button to flip the display 180° degrees and press “**ENTER**” button to flip it back.

Press the “**ENTER**” button to confirm the setting.

To exit out of any of the above options, press the “**MODE**” button.

DMX-512:

- DMX (Digital Multiplex) is a universal protocol used as a form of communication between intelligent fixtures and controllers. A DMX controller sends DMX data instructions from the controller to the fixture. DMX data is sent as serial data that travels from fixture to fixture via the DATA “IN” and DATA “OUT” XLR terminals located on all DMX fixtures (most controllers only have a data “out” terminal).

DMX Linking:

- DMX is a language allowing all makes and models of different manufactures to be linked together and operate from a single controller, as long as all fixtures and the controller are DMX compliant. To ensure proper DMX data transmission, when using several DMX fixtures try to use the shortest cable path possible. The order in which fixtures are connected in a DMX line does not influence the DMX addressing. For example; a fixture assigned to a DMX address of 1 may be placed anywhere in a DMX line, at the beginning, at the end, or anywhere in the middle. When a fixture is assigned a DMX address of 1, the DMX controller knows to send DATA assigned to address 1 to that unit, no matter where it is located in the DMX chain.

DATA Cable (DMX cable) requirements (for DMX operation):

- The Equinox Six Shooter can be controlled via DMX-512 protocol. The DMX address is set on the back of the unit. Your unit and your DMX controller require a standard 3-pin XLR connector for data input/output (figure 1).

Figure 1

Further DMX cables can be purchased from all good sound and lighting suppliers or Prolight dealers.

Please quote:

CABL10 – 2m

CABL11 – 5m

CABL12 – 10m

Also remember that DMX cable must be daisy chained and cannot be split.

Notice:

- Be sure to follow figures 2 & 3 when making your own cables. Do not connect the cable's shield conductor to the ground lug or allow the shield conductor to come in contact with the XLR's outer casing. Grounding the shield could cause a short circuit and erratic behaviour.

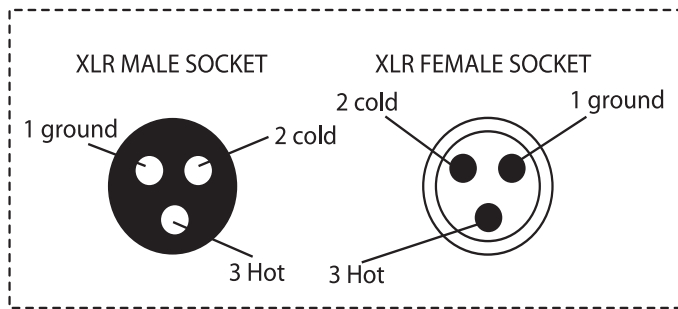
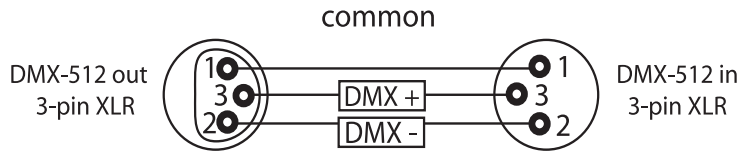


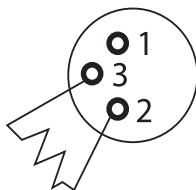
FIGURE 3

XLR Pin Configuration
Pin 1 = Ground
Pin 2 = Negative
Pin 3 = Postive

FIGURE 2

Special Note: Line termination:

- When longer runs of cable are used, you may need to use a terminator on the last unit to avoid erratic behaviour.

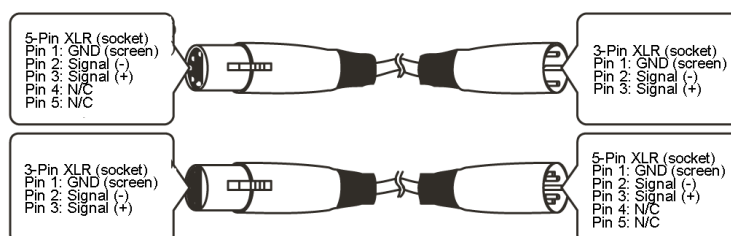


Termination reduces signal transmission problems and interference. it is always advisable to connect a DMX terminal, (resistance 120 Ohm 1/4 W) between pin 2 (DMX-) and pin 3 (DMX+) of the last fixture.

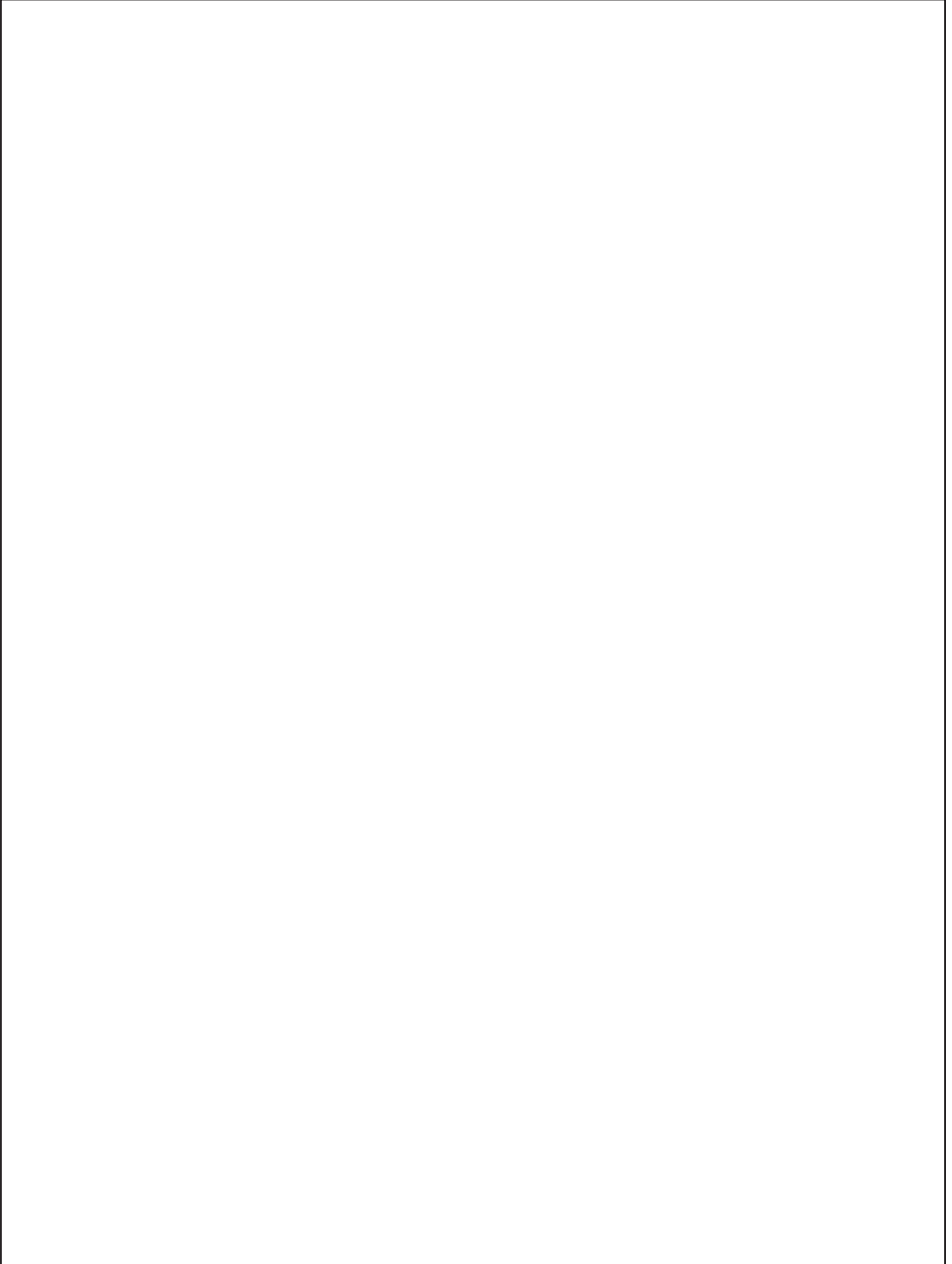
Using a cable terminator (part number CABL90 3-pin, CABL89 5-pin) will decrease the possibilities of erratic behaviour.

5-pin XLR DMX Connectors:

- Some manufactures use 5-pin XLR connectors for data transmission in place of 3-pin. 5-pin XLR fixtures may be implemented in a 3-pin XLR DMX line. When inserting standard 5-pin XLR connectors in to a 3-pin line a cable adaptor must be used. The Chart below details the correct cable conversion.



Notes



Notes

A large, empty rectangular box with a thin black border, occupying most of the page below the 'Notes' header. It is intended for the user to write their notes.

English



***Correct Disposal of this Product
(Waste Electrical & Electronic Equipment)***

(Applicable in the European Union and other European countries with separate collection systems)

This marking shown on the product or its literature, indicates that it should not be disposed with other household wastes at the end of its working life. To prevent possible harm to the environment or human health from uncontrolled waste disposal, please separate this from other types of wastes and recycle it responsibly to promote the sustainable reuse of material resources.

Household users should contact either the retailer where they purchased this product, or their local government office, for details of where and how they can take this item for environmentally safe recycling.

Business users should contact their supplier and check the terms and conditions of the purchase contract. This product should not be mixed with other commercial wastes for disposal.

