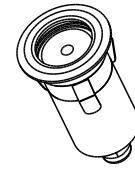




[Http://www.visio-led.com](http://www.visio-led.com)

Specifications are subject to change without prior notice.



## V Star Series User Manual

### 4. Maintenance

Periodically clean the front transparent cover. Use a moist, lint-free cloth. Never use alcohol or solvents!

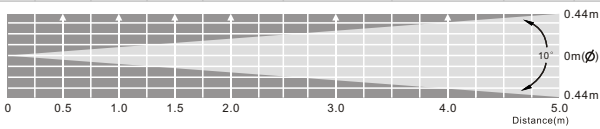
V Star is a high powered single 1W LED fixture with the state of the art LED technology and high efficient optical lens to provide optimal output and vivid color. IP68 rated construction makes it ideal for all interior and exterior applications.

8A

1A

VS-CW:

Distance	0.5	1.0	1.5	2.0	3.0	4.0	5.0	(m)
F	327	89.4	37.7	21.2	9.3	5.4	3.8	(lux)
CW	10°	4230	1074	460	259	116	66.3	45



6A

Power Cable: 2 x 0.75 mm flexible cable, 1 meter long

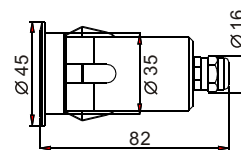
Beam Angle: 10°, Frost version

IP Rated: IP 68

Size: Ø 45 x 82 mm

Inset Hole: 36 mm

Weight: 0.4 kg



3A



**1. Attention:**

- Do not install the fixture near high inflammable liquids or materials.
- Do not allow anything to rest on the fixture.
- Do not install the fixture near the naked flames.
- Do not install the fixture in dirty, dusty location.
- Do not looking directly into the LED light beam at close range.
- Do not attempt to dismantle or modify the unit.

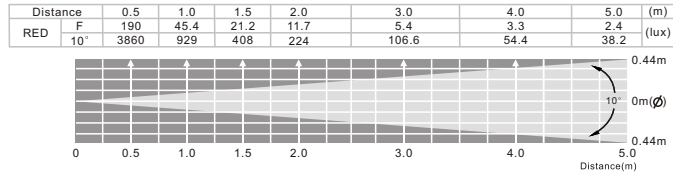
**2. Technical specifications:**

Input Voltage: DC 9-36V or AC 6-26V  
 Max. Power Consumption: 1.7W ( 1.3W for VS-R Red color only )  
 LED Emitter: 1W  
 Available LED Colors: R, G, B, Cool White ( CW ) 6500 K,  
 Warm White ( WW ) 3200 K  
 LED Life Expectancy: 50,000hrs

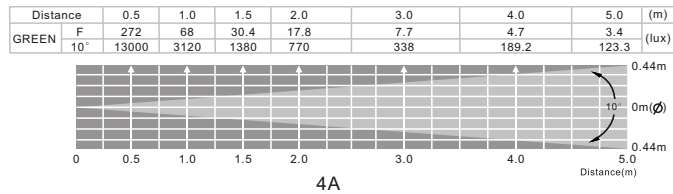
2A

Luminous intensity:

**VS-R:**



**VS-G:**



4A

**3. Installation:**

The power should be supply by PSU-100-24 ( optional DC power supply ) and PSU-50-24 ( optional AC adapter ).

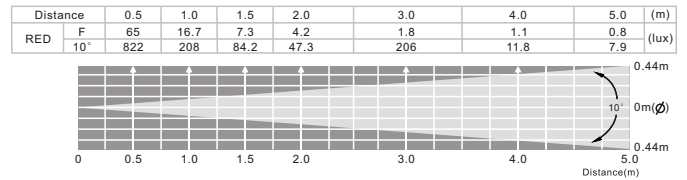
**CAUTIONS!**  
 Ensure that main power supply is off before installing or wire the LED fixture.

When connect the fixture to DC power supply. Please refer to the following diagram to link the LED fixtures.

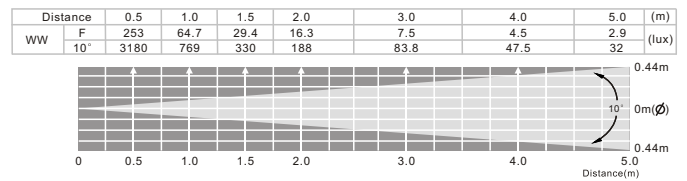


7A

**VS-B:**



**VS-WW:**



5A