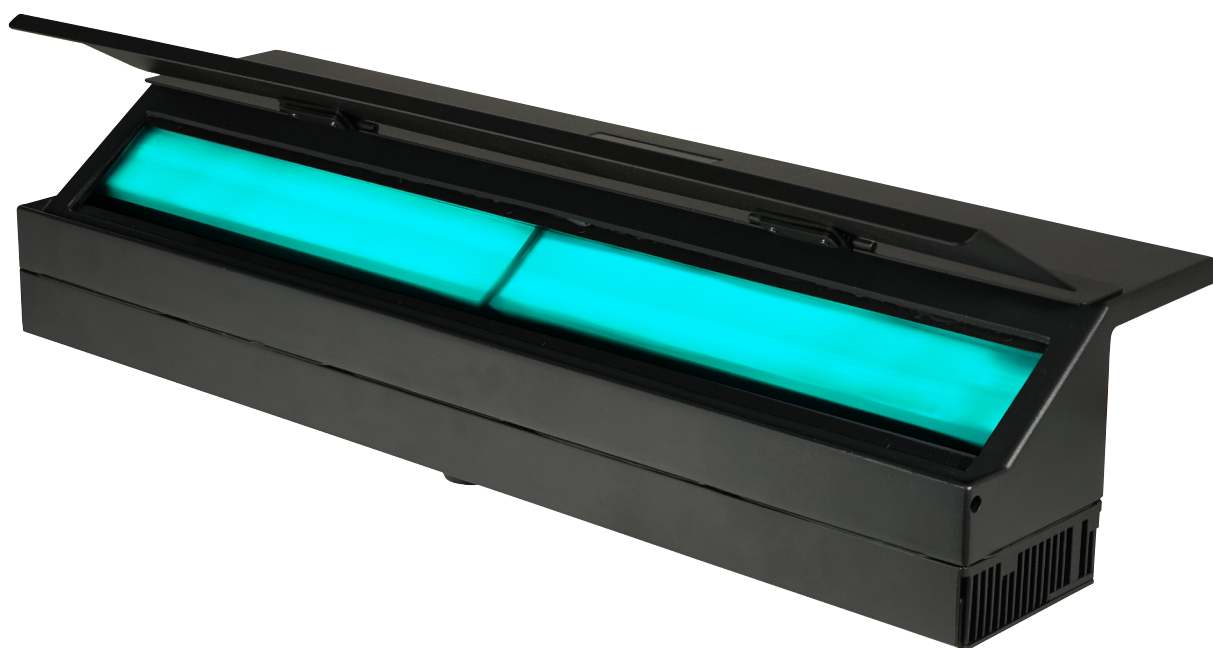


elumen8

Virtuoso 700 CYC IP RGBALC User Manual



Order code: ELUM137

WARNING

FOR YOUR OWN SAFETY, PLEASE READ THIS USER MANUAL CAREFULLY BEFORE YOUR INITIAL START-UP!

- Before your initial start-up, please make sure that there is no damage caused during transportation.
- Should there be any damage, consult your dealer and do not use the equipment.
- To maintain the equipment in good working condition and to ensure safe operation, it is necessary for the user to follow the safety instructions and warning notes written in this manual.
- Please note that damages caused by user modifications to this equipment are not subject to warranty.



IMPORTANT:

The manufacturer will not accept liability for any resulting damages caused by the non-observance of this manual or any unauthorised modification to the equipment.

- Never let the power cable come into contact with other cables. Handle the power cable and all mains voltage connections with particular caution!
- Never remove warning or informative labels from the unit.
- Do not open the equipment and do not modify the unit.
- Do not connect this equipment to a dimmer pack.
- Do not switch the equipment on and off in short intervals, as this will reduce the system's life.
- Only use the equipment indoors.
- Do not expose to flammable sources, liquids or gases.
- Always disconnect the power from the mains when equipment is not in use or before cleaning! Only handle the power-cable by the plug. Never pull out the plug by pulling the power-cable.
- Make sure that the available mains supply voltage is between 100~240V AC, 50/60Hz.
- Make sure that the power cable is never crimped or damaged. Check the equipment and the power cable periodically.
- If the equipment is dropped or damaged, disconnect the mains power supply immediately and have a qualified engineer inspect the equipment before operating again.
- If the equipment has been exposed to drastic temperature fluctuation (e.g. after transportation), do not connect power or switch it on immediately. The arising condensation might damage the equipment. Leave the equipment switched off until it has reached room temperature.
- If your product fails to function correctly, stop use immediately. Pack the unit securely (preferably in the original packing material), and return it to your Pro Light dealer for service.
- Only use fuses of same type and rating.
- Repairs, servicing and power connection must only be carried out by a qualified technician. THIS UNIT CONTAINS NO USER SERVICEABLE PARTS.
- This lighting fixture is for professional use only - it is not designed for or suitable for household use. The product must be installed by a qualified technician in accordance with local territory regulations. The safety of the installation is the responsibility of the installer. The fixture presents risks of severe injury or death due to fire hazards, electric shock and falls.
- Warning! Risk Group 2 LED product according to EN 62471. Keep a distance of at least 11feet (3.3m) to avoid direct eye and skin exposure. Do not operate the fixture if the external cover protective lens is damaged or missing. Avoid direct viewing of the UV light and refrain from using optical instruments or any device that may concentrate the light/radiation output. We advise users to take necessary precautions to minimise direct exposure to UV radiation and individuals suffering from a range of eye conditions, sunlight exposure disorders, or individuals using photosensitive medication, may receive discomfort if exposed to the ultraviolet (UV) light emitted from this fixture.
- WARRANTY: Two years from date of purchase.

OPERATING DETERMINATIONS

If this equipment is operated in any other way, than those described in this manual, the product may suffer damage and the warranty becomes void. Incorrect operation may lead to danger e.g: short-circuit, burns and electric shocks etc.

Do not endanger your own safety and the safety of others!

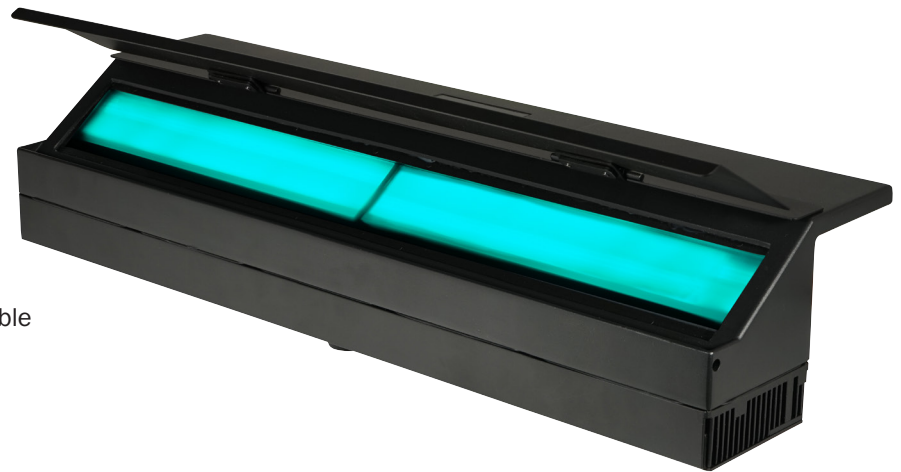
Incorrect installation or use can cause serious damage to people and/or property.

Please note: These fixtures are intended for stage lighting and entertainment applications only, and are not intended for extended periods of use, including but not limited to house-light, industrial or architectural applications and should only be operated with short duty cycles.

Virtuoso 700 CYC IP RGBALC

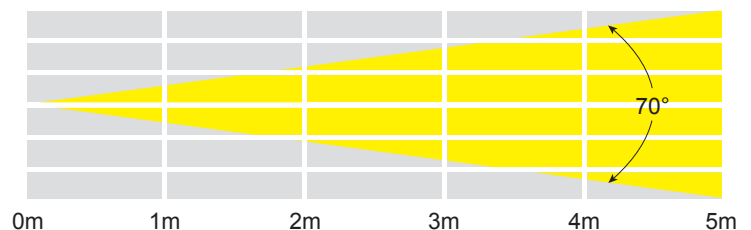
The Virtuoso 700 CYC IP is an IP65 rated CYC/footlight designed for film, theatre, and TV productions. With its high CRI and homogenous output, it delivers exceptional colour accuracy and even field illumination. Equipped with a powerful 180W RGBALC LED array, it offers a wide range of vibrant colours. One of its standout features is the selectable safety light function, which keeps the LEDs on at a low level during 'blackouts' to highlight the stage edge and prevent accidents. The adjustable foot ensures easy positioning, whilst the integral eyebrow allows for precise beam adjustment. Additionally, the Virtuoso 700 CYC IP operates silently and boasts an IP65 rating for dust and water resistance. Its HSIC/CMY colour management system enables the creation of virtually any colour, while the virtual colour wheel provides quick access to a multitude of hues. Furthermore, it offers colour temperature control from 1800K to 10000K. What more could you ask for from such a feature-packed fixture.

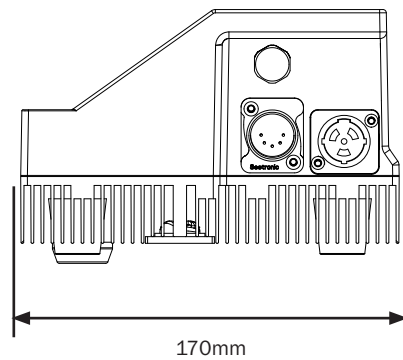
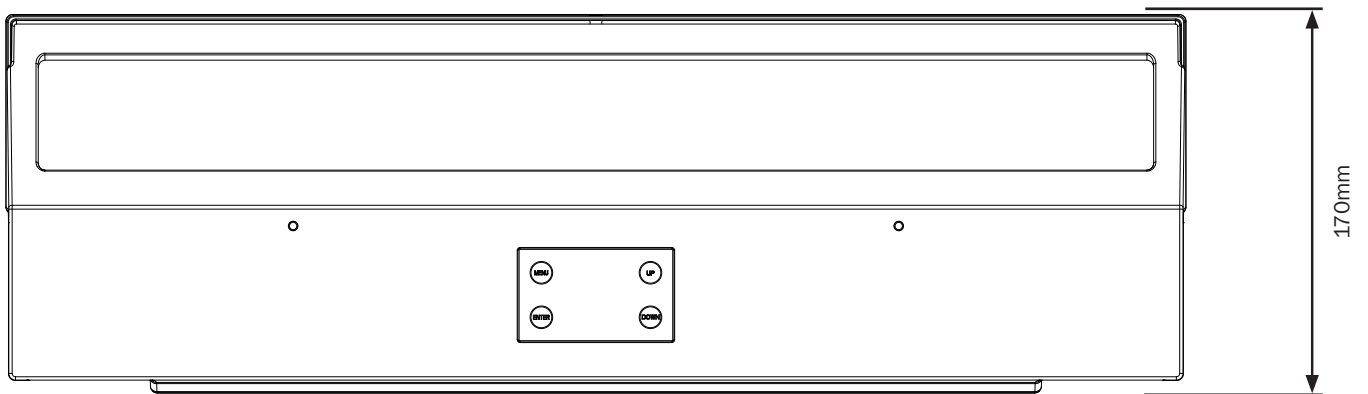
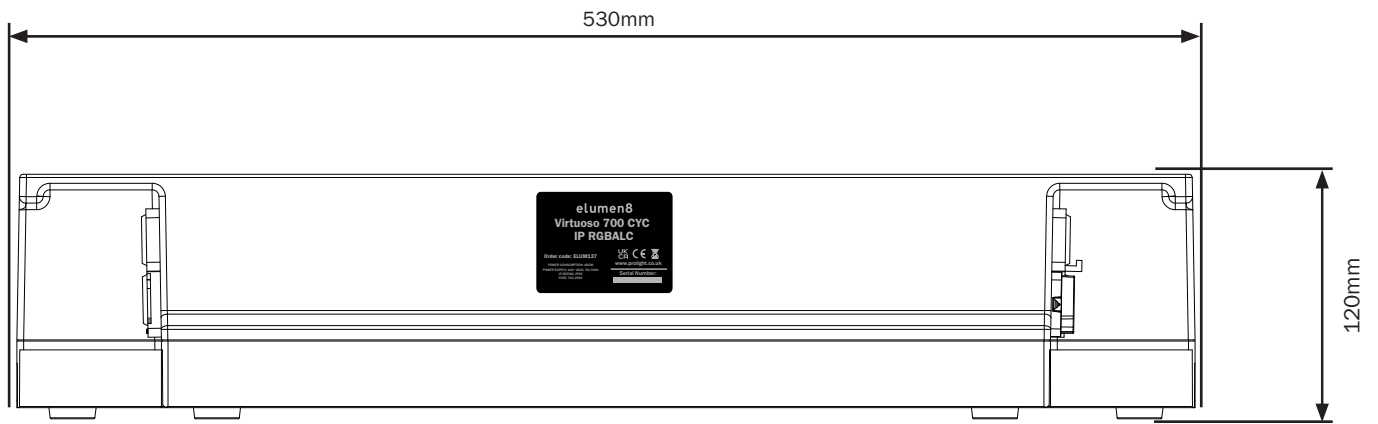
- 2 year warranty
- 1 x 180W six-colour LED Array (RGBALC)
- Beam angle: 70°
- 1,425 Lux @ 2m
- CRI: 93
- Colour temperature: 1,800K-10,000K
- Refresh rate: 1.2kHz, 2.4kHz, 4kHz, 6kHz or 25kHz selectable
- Eyebrow for beam shaping
- DMX channels: 3/7/8/10/13 or 20 selectable
- RDM (Remote Device Management)
- Safety footlight feature
- Auto and master/slave modes
- 48 preset colour macros
- 0 - 100% 8 or 16 bit dimming
- Variable strobe
- Adjustable central foot
- Quick release omega clamp included
- 4 button menu with OLED display
- PowerTwist TR1 input/output
- IP rated 5-Pin XLR inputs/outputs
- Convection cooled

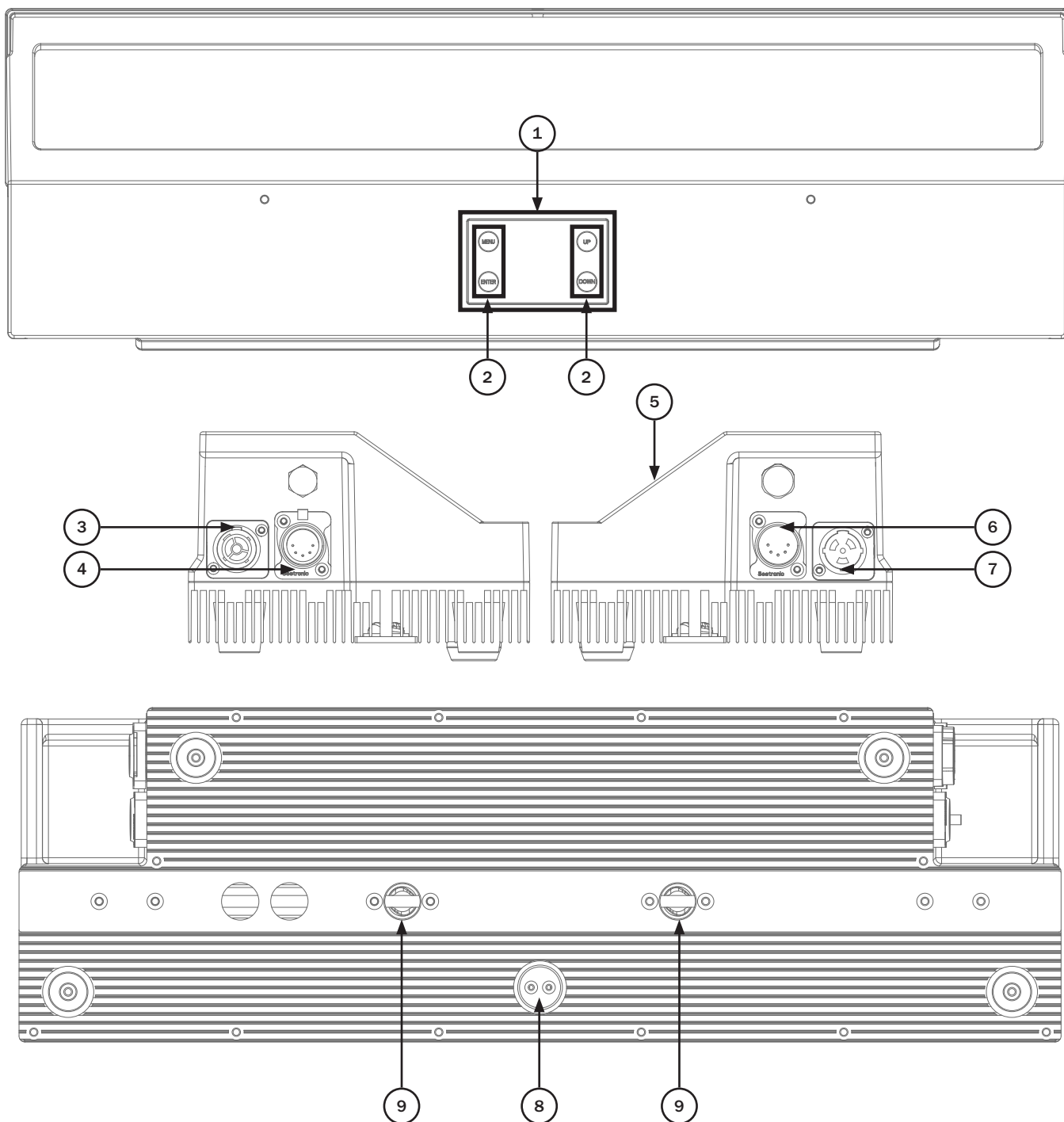


70° - Lux					
FULL ON	5700	1425	634	356	228
R	644	161	72	40	26
G	1052	263	119	66	42
B	196	49	22	12	8
A	1000	250	111	63	40
L	2124	531	236	133	85
C	412	103	46	26	17

Specifications	Virtuoso 700 CYC IP RGBALC
Power consumption	180W
Power supply	100~240V, 50/60Hz
IP rating	IP65
Fuse	T2A 250V
Dimensions	120 x 530 x 170mm
Weight	6kg
Order code	ELUM137







01 - OLED display
 02 - Function buttons
 03 - PowerTwist TR1 output

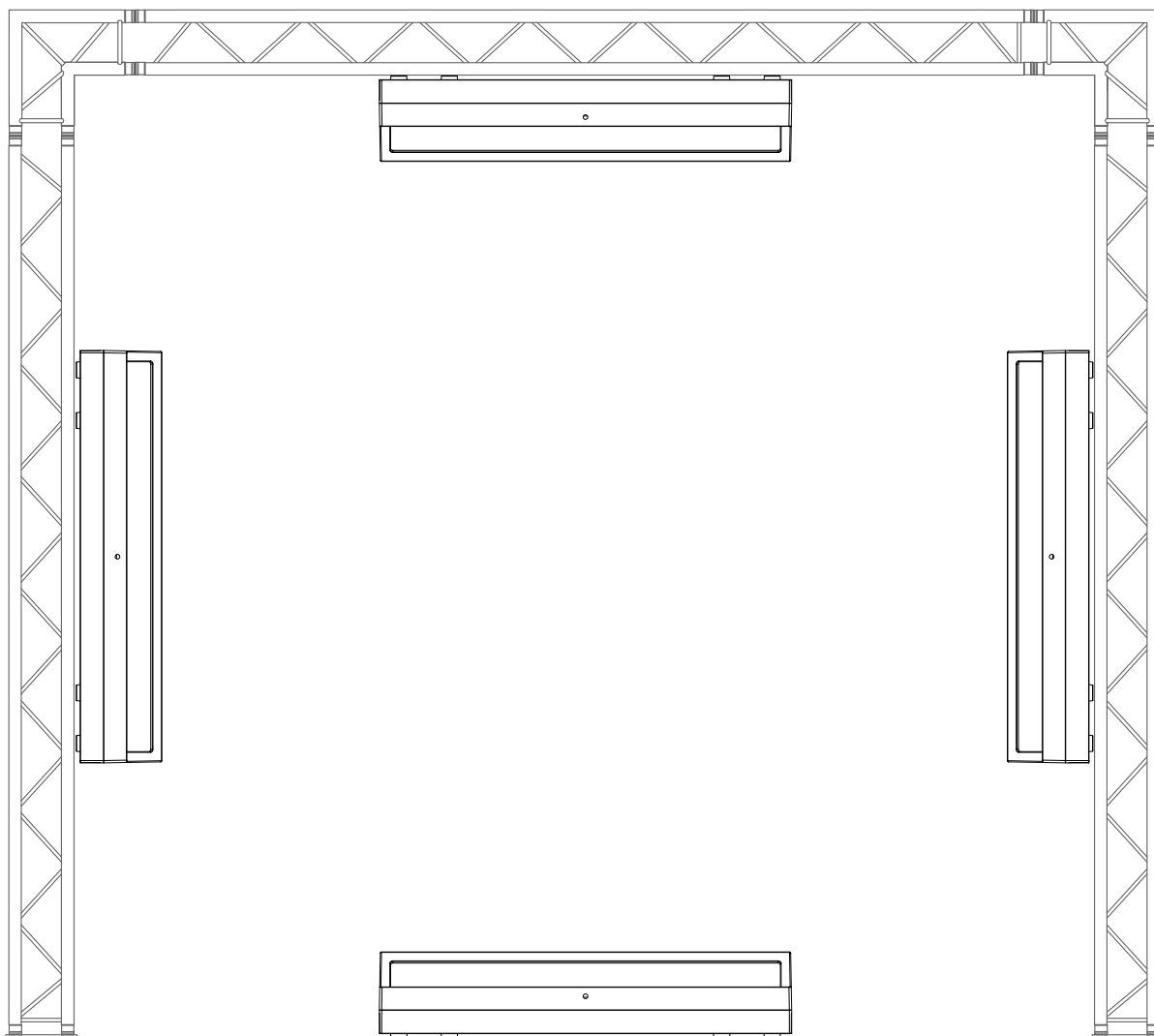
04 - 5-Pin DMX output
 05 - Eyebrow
 06 - 5-Pin DMX input

07 - PowerTwist TR1 input
 08 - Central foot
 09 - Omega mounting points

In the box: **1 x fixture,**
1 x eyebrow,
1 x omega clamp
1 x safety wire
& 1 x power cable

Before installing the fixture, the supporting structure (ie. truss) must be able to hold a minimum of 10 times the fixtures weight without any deformation (eg. 15kg - 150kg point load). The fixture must be secured with a secondary safety attachment when being installed (ie. an appropriate safety cable). Never stand directly below the fixture when mounting, removing, and/or servicing.

Overhead installation requires experience and qualifications to calculate working load limits, the material being used at the installation area and periodic safety inspections of the fixture and installation material. If you do not have the relevant experience and/or qualifications please do not attempt the installation yourself. The installation should be checked annually by a qualified person.

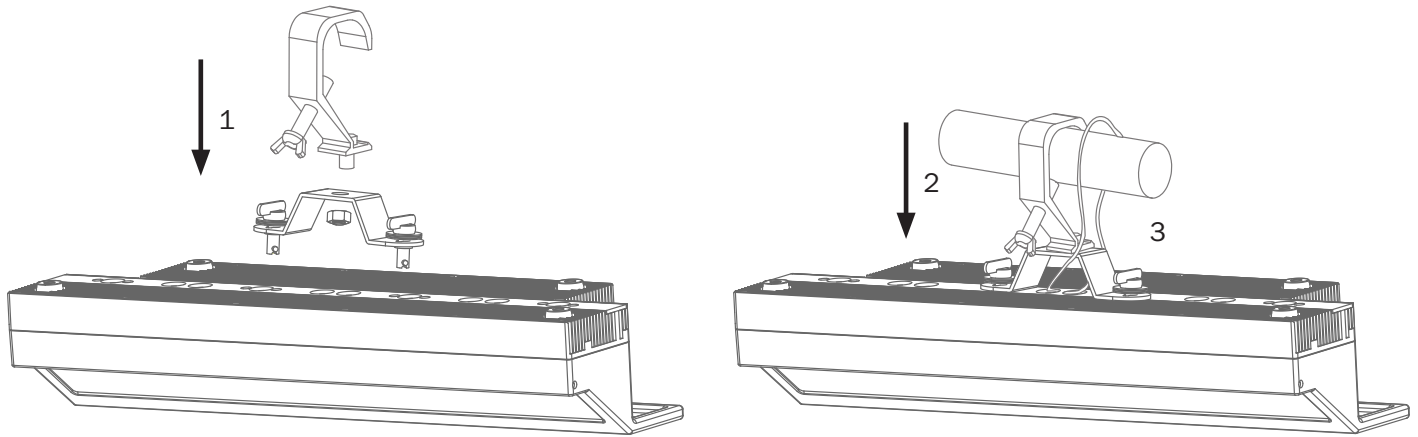


The Elumen8 Virtuoso 700 CYC IP RGBALC can be operated in a number of mounting positions as shown in the diagram above, hanging upside-down from the ceiling or truss, mounting sideways on truss or stood upright on a flat level surface. Always use a safety wire as an extra safety precaution to prevent damage/injury in the event a clamp fails (see the next page for clamp installation).

Never use the carry handles for secondary attachments.

Installation:

1. Fasten the clamp to the fixtures bracket with a bolt and lock nut through one of the mounting holes.
2. Mount the fixture onto your truss system via the clamp and tighten to ensure secure.
3. Pull the safety cable through the fixture safety eye and around the truss.



CAUTION!
WE ALWAYS RECOMMEND TESTING THE IP INTEGRITY AFTER LAMP REPLACEMENT/OPENING THE HOUSING, USING THE ELUMEN8 IP TESTER.
CONTACT PROLIGHT SERVICE FOR MORE INFORMATION.

Virtuoso 700 CYC IP RGBALC IP Testing Parameters

Type Test	Min. Pressure	Max. Pressure	Target Value	Filling Time	Stable Time	Testing Time	Acceptable Change due to Leakage
Pressure Test	1.01 psi (7 KPa)	1.3 psi (9 KPa)	1.16 psi (8 KPa)	20 seconds	8 seconds	15 seconds	0.01 psi (<0.1 KPa)

Elumen8 IP Tester
 sold separately
 (Order code: ELUM699)



To unlock the menu system first press and hold menu for 10-15 seconds to wake the menu system, then use the password “UP, DOWN, UP, DOWN, ENTER” to access the menu system.

Main Menu	Sub Menus	Values (Default Settings in BOLD)	Description	
STATIC	RED	000-255	Manual mode	
	GREEN	000-255		
	BLUE	000-255		
	AMBER	000-255		
	LIME	000-255		
	CYAN	000-255		
	STROBE	000-25		
ADDRESS		001 -512	DMX address settings	
RUN MODE		DMX Slave	Run mode settings	
PERSONALITY		Basic	DMX channel mode settings	
		SSP		
		Tour		
		TR16		
		HSIC		
		CMY		
AUTO PROGRAM	AUTO 1	000-255	Auto/custom programs	
	AUTO 2	000-255		
	AUTO 3	000-255		
	AUTO 4	000-255		
	AUTO 5	000-255		
	AUTO 6	000-255		
	AUTO 7	000-255		
	AUTO 8	000-255		
	AUTO 9	000-255		
	AUTO 10	000-255		
		PR 1		
		PR 2		

Main Menu	Sub Menus		Values (Default Settings in BOLD)	Description	
EDIT	PROGRAM 1-2	SCENE 1-10	RED	000-255	Custom program settings
			GREEN	000-255	
			BLUE	000-255	
			AMBER	000-255	
			LIME	000-255	
			CYAN	000-255	
			STROBE	000-25	
			TIME	000-255	
	FADE	000-255			
UPLOAD	PASSCODE (<UP>, <DOWN>, <UP>, <DOWN>, <ENTER>)	SEND		Send custom programs to slave fixtures	
SETTING	PASSCODE (<UP> <DOWN> <UP> <DOWN> <ENTER>)	RESET	PASSCODE (<UP>, <DOWN>, <UP>, <DOWN>, <ENTER>)	Restore factory settings	
		DIMMER		DIM4 OFF	Dimmer settings
		DMX ERROR		SAVE BLACK	DMX fail settings
		PWM RATE		1200Hz 2400Hz 4000Hz 6000Hz 25000Hz	Refresh rate settings
		DISP KEY		ON OFF	Display lock setting (passcode is <UP>, <DOWN>, <UP>, <DOWN>, <ENTER>)
		DISP TIME		ON 10S 30S 2MIN	Display backlight settings
		SAFETY LIGHT	ON/OFF	ON OFF	Safety light settings
			COLOUR	RED	
				GREEN	
				BLUE	
				WARM WHITE COOL WHITE	
		INFO	FIXTURE HOURS		xxh
VERSION			VXXXXXXXXXX	Software version	
RDM	UID		0X09a5XXXXXXXX	Fixture UID	
	LABEL		VIRTUOSO 700 CYC IP RGBALC	Fixture model	

Main Menu	Sub Menus	Values (Default Settings in BOLD)	Description
CCT	1800K		Colour temperature presets
	2200K		
	2700K		
	3000K		
	3200K		
	4000K		
	4500K		
	5000K		
	5600K		
	6000K		
	6500K		
	7000K		
	8000K		
	10000K		

DMX channel modes:

3 channel mode (BASIC):

Channel	Value	Function
CH1	000-255	Master dimmer (0-100%)
CH2	Colour presets	
	000-010	No function
	011-255	Preset colour (pages 15-16)
CH3	Colour temperature presets	
	000-009	No function
	009-010	1800K
	000-025	2200K
	026-040	2700K
	041-055	3000K
	056-070	3200K
	071-085	4000K
	086-100	4500K
	101-115	5000K
	116-130	5600K
	131-145	6000K
	146-160	6500K
	161-175	7000K
	176-190	8000K
191-255	10000K	

7 channel mode (HSIC):

Channel	Value	Function
CH1	000-255	Intensity (0-100%)
CH2	000-255	Hue
CH3	000-255	Hue fine
CH4	000-255	Saturation
CH5	Colour temperature presets	
	000-009	No function
	009-010	1800K
	011-025	2200K
	026-040	2700K
	041-055	3000K
	056-070	3200K
	071-085	4000K
	086-100	4500K
	101-115	5000K
	116-130	5600K
	131-145	6000K
	146-160	6500K
	161-175	7000K
	176-190	8000K
	191-255	10000K
CH6	Strobe	
	000-009	No function
	010-099	Strobe (slow-fast)
	100-109	No function
	110-179	Lightning strobe (slow-fast)
	180-189	No function
190-255	Random strobe (slow-fast)	
CH7	Control	
	000-100	No function
	101-110	Dimmer Off
	111-120	Dimmer Dim4
	121-150	No function
	151-160	1200Hz
	161-170	2400Hz
	171-180	4000Hz
	181-190	6000Hz
	191-200	25000Hz
201-210	All reset	
211-255	No function	

8 channel mode (SSP):

Channel	Value	Function
CH1	000-255	Master dimmer (0-100%)
CH2	000-255	Red dimmer (0-100%)
CH3	000-255	Green dimmer (0-100%)
CH4	000-255	Blue dimmer (0-100%)
CH5	000-255	Amber dimmer (0-100%)
CH6	000-255	Lime dimmer (0-100%)
CH7	000-255	Cyan dimmer (0-100%)
CH8	Strobe	
	000-009	No function
	010-099	Strobe (slow-fast)
	100-109	No function
	110-179	Lightning strobe (slow-fast)
	180-189	No function
190-255	Random strobe (slow-fast)	

10 channel mode (CMY):

Channel	Value	Function
CH1	000-255	Master dimmer (0-100%)
CH2	000-255	Cyan dimmer (0-100%)
CH3	000-255	Magenta dimmer (0-100%)
CH4	000-255	Yellow dimmer (0-100%)
CH5	Colour presets	
	000-010	No function
	011-255	Preset colour (pages 15-16)
CH6	Colour temperature presets	
	000-009	No function
	009-010	1800K
	011-025	2200K
	026-040	2700K
	041-055	3000K
	056-070	3200K
	071-085	4000K
	086-100	4500K
	101-115	5000K
	116-130	5600K
	131-145	6000K
	146-160	6500K
	161-175	7000K
	176-190	8000K
191-255	10000K	
CH7	Auto	
	000-040	No function
	041-050	Auto 1
	051-060	Auto 2
	061-070	Auto 3
	071-080	Auto 4
	081-090	Auto 5
	091-100	Auto 6
	101-110	Auto 7
	111-120	Auto 8
	121-130	Auto 9
	131-140	Auto 10
	141-150	Custom 1
151-160	Custom 2	
161-255	No function	
CH8	000-255	Auto speed adjustment (slow-fast)

Channel	Value	Function
CH9	Strobe	
	000-009	No function
	010-099	Strobe (slow-fast)
	100-109	No function
	110-179	Lightning strobe (slow-fast)
	180-189	No function
190-255	Random strobe (slow-fast)	
CH10	Control	
	000-100	No function
	101-110	Dimmer Off
	111-120	Dimmer Dim4
	121-150	No function
	151-160	1200Hz
	161-170	2400Hz
	171-180	4000Hz
	181-190	6000Hz
	191-200	25000Hz
	201-210	All reset
	211-255	No function

13 channel mode (TOUR):

Channel	Value	Function
CH1	000-255	Master dimmer (0-100%)
CH2	000-255	Red dimmer (0-100%)
CH3	000-255	Green dimmer (0-100%)
CH4	000-255	Blue dimmer (0-100%)
CH5	000-255	Amber dimmer (0-100%)
CH6	000-255	Lime dimmer (0-100%)
CH7	000-255	Cyan dimmer (0-100%)
CH8	Colour presets	
	000-010	No function
	011-255	Preset colour (pages 15-16)
CH9	Colour temperature presets	
	000-009	No function
	009-010	1800K
	000-025	2200K
	026-040	2700K
	041-055	3000K
	056-070	3200K
	071-085	4000K
	086-100	4500K
	101-115	5000K
	116-130	5600K
	131-145	6000K
	146-160	6500K
	161-175	7000K
	176-190	8000K
191-255	10000K	
CH10	Auto	
	000-040	No function
	041-050	Auto 1
	051-060	Auto 2
	061-070	Auto 3
	071-080	Auto 4
	081-090	Auto 5
	091-100	Auto 6
	101-110	Auto 7
	111-120	Auto 8
	121-130	Auto 9
	131-140	Auto 10
	141-150	Custom 1

Channel	Value	Function
CH10 (cont.)	151-160	Custom 2
	161-255	No function
CH11	000-255	Auto speed adjustment (slow-fast)
CH12	Control	
	000-009	No function
	010-099	Strobe (slow-fast)
	100-109	No function
	110-179	Lightning strobe (slow-fast)
	180-189	No function
CH13	190-255	Random strobe (slow-fast)
	000-100	No function
	101-110	Dimmer Off
	111-120	Dimmer Dim4
	121-150	No function
	151-160	1200Hz
	161-170	2400Hz
	171-180	4000Hz
	181-190	6000Hz
	191-200	25000Hz
	201-210	All reset
	211-255	No function

20 channel mode (TR16):

Channel	Value	Function
CH1	000-255	Master dimmer (0-100%)
CH2	000-255	Master dimmer Fine
CH3	000-255	Red dimmer (0-100%)
CH4	000-255	Red Fine
CH5	000-255	Green dimmer (0-100%)
CH6	000-255	Green Fine
CH7	000-255	Blue dimmer (0-100%)
CH8	000-255	Blue Fine
CH9	000-255	Amber dimmer (0-100%)
CH10	000-255	Amber Fine
CH11	000-255	Lime dimmer (0-100%)
CH12	000-255	Lime Fine
CH13	000-255	Cyan dimmer (0-100%)
CH14	000-255	Cyan Fine
CH15	Colour presets	
	000-010	No function
	011-255	Preset colour (pages 15-16)
CH16	Colour temperature presets	
	000-009	No function
	009-010	1800K
	011-025	2200K
	024-040	2700K
	039-055	3000K
	056-070	3200K
	071-085	4000K
	086-100	4500K
	101-115	5000K
	116-130	5600K
	131-145	6000K
	146-160	6500K
	161-175	7000K
	176-190	8000K
191-255	10000K	

Channel	Value	Function
CH17	Auto	
	000-040	No function
	041-050	Auto 1
	051-060	Auto 2
	061-070	Auto 3
	071-080	Auto 4
	081-090	Auto 5
	091-100	Auto 6
	101-110	Auto 7
	111-120	Auto 8
	121-130	Auto 9
	131-140	Auto 10
	141-150	Custom 1
	151-160	Custom 2
161-255	No function	
CH18	000-255	Auto speed adjustment (slow-fast)
CH19	Strobe	
	000-009	No function
	010-099	Strobe (slow-fast)
	100-109	No function
	110-179	Lightning strobe (slow-fast)
	180-189	No function
	190-255	Random strobe (slow-fast)
CH20	Control	
	000-100	No function
	101-110	Dimmer Off
	111-120	Dimmer Dim4
	121-150	No function
	151-160	1200Hz
	161-170	2400Hz
	171-180	4000Hz
	181-190	6000Hz
	191-200	25000Hz
	201-210	All reset
	211-255	No function

	Description			DMX Values
Preset Colour	Blackout	No Function	Blackout	000-010
	Colour 1	L176	Loving Amber	011-015
	Colour 2	R40	Light Salmon	016-020
	Colour 3	L24	Scarlet	021-025
	Colour 4	L164	Flame Red	026-030
	Colour 5	L747	Easy White	031-035
	Colour 6	R303	Warm Peach	036-040
	Colour 7	L08	Dark Salmon	041-045
	Colour 8	L25	Sunset Red	046-050
	Colour 9	L04	Medium Bastard Amber	051-055
	Colour 10	L237	CID (To Tungsten)	056-060
	Colour 11	R321	Soft Golden Amber	061-065
	Colour 12	L652	Urban Sodium	066-070
	Colour 13	L212	LCT Yellow (Y1)	071-075
	Colour 14	L765	LEE Yellow	076-080
	Colour 15	L513	Ice And A Slice	081-085
	Colour 16	L100	Spring Yellow	086-090
	Colour 17	L244	LEE Plus Green	091-095
	Colour 18	R4430	CalColor 30 Green	096-100
	Colour 19	L122	Fern Green	101-105
	Colour 20	L90	Dark Yellow Green	106-110
	Colour 21	L243	LEE Fluorescent 3600K	111-115
	Colour 22	R92	Turquoise	116-120
	Colour 23	R94	Kelly Green	121-125
	Colour 24	L327	Forest Green	126-130
	Colour 25	L191	Cosmetic Aqua Blue	131-135
	Colour 26	L728	Steel Green	136-140
	Colour 27	L117	Steel Blue	141-145
	Colour 28	L354	Special Steel Blue	146-150
	Colour 29	L53	Paler Lavender	151-155
	Colour 30	L501	New Colour Blue	156-160
	Colour 31	L174	Dark Steel Blue	161-165
	Colour 32	L165	Daylight Blue	166-170
	Colour 33	L136	Pale Lavender	171-175
	Colour 34	L194	Surprise Pink	176-180
	Colour 35	L142	Pale Violet	181-185
	Colour 36	L700	Perfect Lavender	186-190
	Colour 37	L35	Light Pink	191-195
	Colour 38	L794	Pretty'n Pink	196-200
	Colour 39	L328	Follies Pink	201-205
Colour 40	L795	Magical Magenta	206-210	

	Description			DMX Values
Preset colour (cont.)	Colour 41	L154	Pale Rose	211-215
	Colour 42	L127	Smokey Pink	216-220
	Colour 43	L192	Flesh Pink	221-225
	Colour 44	L332	Special Rose Pink	226-230
	Colour 45	L790	Moroccan Pink	231-235
	Colour 46	L157	Pink	236-240
	Colour 47	R332	Cherry Rose	241-245
	Colour 48	L128	Cool LED Bright Pink	246-250
	Blackout	No Function	Blackout	251-255

Setting the DMX address:

The DMX mode enables the use of a universal DMX controller. Each fixture requires a “start address” from 1- 512. A fixture requiring one or more channels for control begins to read the data on the channel indicated by the start address. For example, a fixture that occupies or uses 7 channels of DMX and was addressed to start on DMX channel 100, would read data from channels: 100, 101, 102, 103, 104, 105 and 106. Choose a start address so that the channels used do not overlap. E.g. the next unit in the chain starts at 107.

DMX 512:

DMX (Digital Multiplex) is a universal protocol used as a form of communication between intelligent fixtures and controllers. A DMX controller sends DMX data instructions from the controller to the fixture. DMX data is sent as serial data that travels from fixture to fixture via the DATA “IN” and DATA “OUT” XLR terminals located on all DMX fixtures (most controllers only have a data “out” terminal).

DMX linking:

DMX is a language allowing all makes and models of different manufactures to be linked together and operate from a single controller, as long as all fixtures and the controller are DMX compliant. To ensure proper DMX data transmission, when using several DMX fixtures try to use the shortest cable path possible. The order in which fixtures are connected in a DMX line does not influence the DMX addressing. For example; a fixture assigned to a DMX address of 1 may be placed anywhere in a DMX line, at the beginning, at the end, or anywhere in the middle. When a fixture is assigned a DMX address of 1, the DMX controller knows to send DATA assigned to address 1 to that unit, no matter where it is located in the DMX chain.

DATA cable (DMX cable) requirements (for DMX operation):

This fixture can be controlled via DMX-512 protocol. The DMX address is set on the back of the unit. Your unit requires either a standard 3-pin or 5-pin XLR connector for data input/output, see images below.



Further DMX cables can be purchased from all good sound and lighting suppliers or Prolight Concepts dealers.

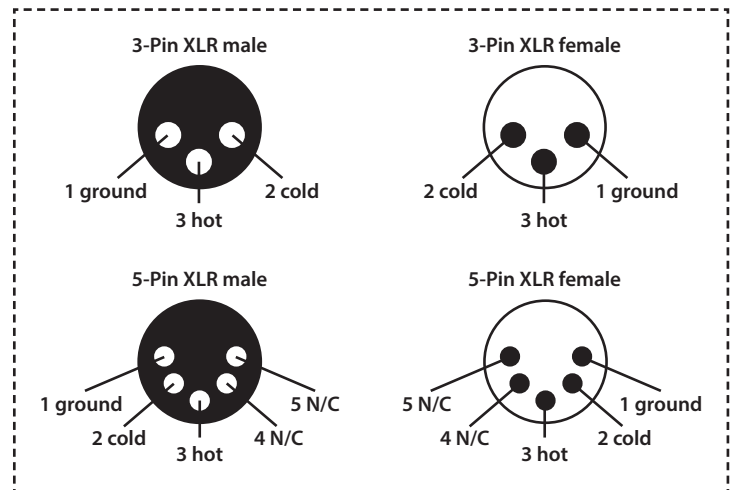
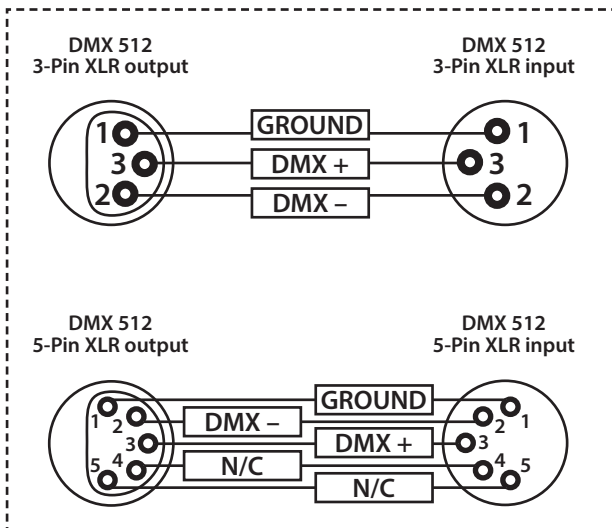
Please quote:	3-Pin:	CABL10 - 2m	CABL11 - 5m	CABL12 - 10m
	5-Pin:	CABL185 - 2m	CABL187 - 5m	CABL188 - 10m

Also remember that DMX cable must be daisy chained and cannot be split.

Notice:

Be sure to follow the diagrams below when making your own cables. Do not connect the cables shield conductor to the ground lug or allow the shield conductor to come in contact with the XLRs outer casing. Grounding the shield could cause a short circuit and erratic behaviour.

Pin Configuration	
3-Pin	5-Pin
	Pin 1 - Ground
	Pin 2 - Negative
	Pin 3 - Positive
-	Pin 4 - N/C
-	Pin 5 - N/C

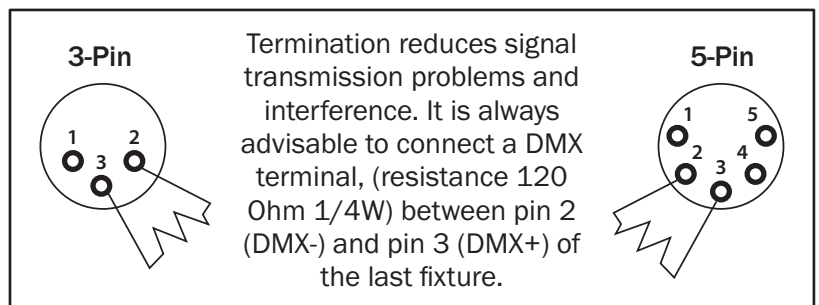


Line termination:

When longer runs of cable are used, you may need to use a terminator on the last unit to avoid erratic behaviour.

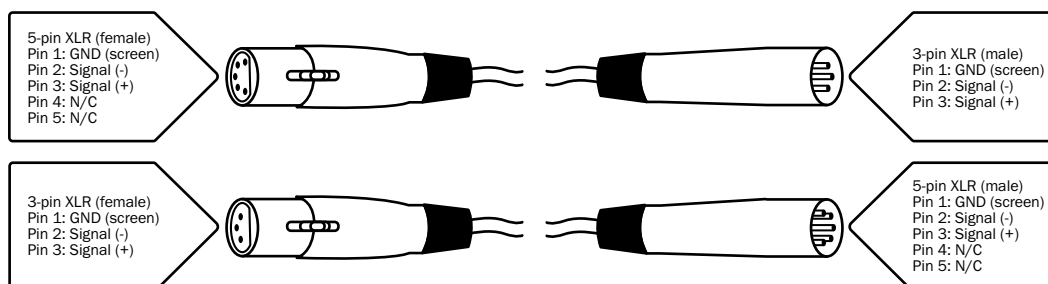
Using a cable terminator will decrease the possibilities of erratic behaviour.

(3-pin - Order ref: CABL90,
5-pin - Order ref: CABL89)



5-pin XLR DMX connectors:

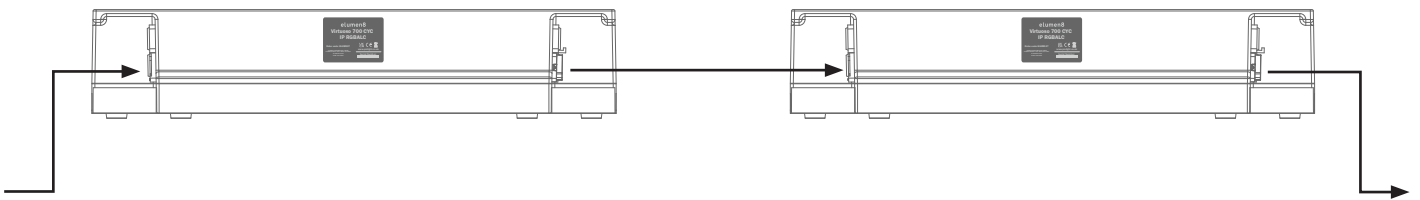
Some manufactures use 5-pin XLR connectors for data transmission in place of 3-pin. 5-pin XLR fixtures may be implemented in a 3-pin XLR DMX line. When inserting standard 5-pin XLR connectors in to a 3-pin line a cable adaptor must be used. The diagram below details the correct cable conversion.



Power linking:

This fixture provides power linking via the power output on the rear allowing multiple units to be connected together. The maximum number of fixtures that can be connected is 8 fixtures @ 240V or 4 fixtures @ 120V (including the first fixture). After the maximum number of fixtures are connected a new power run will need to be started.

Please note: Caution should be used when power linking other fixtures to the Virtuoso 700 CYC IP RGBALC as the power consumption of other fixtures will vary. Fixtures fitted with lamps often require 2/3 times more current on startup, these may require their own power source.





***Correct Disposal of this Product
(Waste Electrical & Electronic Equipment)***

**(Applicable in the European Union and other European countries
with separate collection systems)**

This marking shown on the product or its literature, indicates that it should not be disposed with other household wastes at the end of its working life. To prevent possible harm to the environment or human health from uncontrolled waste disposal, please separate this from other types of wastes and recycle it responsibly to promote the sustainable reuse of material resources.

Household users should contact either the retailer where they purchased this product, or their local government office, for details of where and how they can take this item for environmentally safe recycling.

Business users should contact their supplier and check the terms and conditions of the purchase contract. This product should not be mixed with other commercial wastes for disposal.

