

FLEXOLED

www.prolight.co.uk



F05



F07

USER MANUAL



Installation

The FlexoLED F05 and F07 must be powered using a dedicated power supply, (sold separately). (LEDC230 for up to 10M and LEDC231 for up to 20M of any colour of the F05 or F07). Various accessories can be purchased to allow the FlexoLED to be shaped and extended.

- Before installation or maintenance, please ensure that the power is switched off at the mains.
- IP rating: IP-68 (protection against dust and water submersion)
Note: All joints, end caps and connections must be sealed correctly to achieve the IP-68 rating.
- Please ensure the polarity and all connections are correct before switching on the power supply.
- Working temperature : -20°C ~ +60°C.

Installation instructions

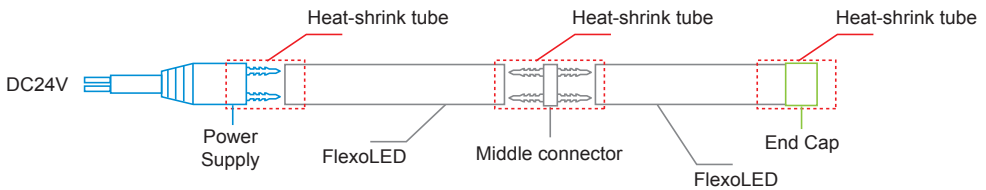
- 1, Isolate from the power supply before installation or maintenance.
 - 2, Only a DC 24V power supply must be used with the FlexoLED F05/07 series.
 - 3, Please follow the bullet points below to connect the FlexoLED together with the relevant accessories (see diagram 1).
- Connect the power supply to the start of your FlexoLED display.
Insert the pins into the wire conductors and ensure a positive connection is made. The FlexoLED and power supply is indicated “ +” and “-”, if these are connected incorrectly, the FlexoLED will not illuminate.
 - Apply glue to the inside of the heat-shrink tube and slide it over to cover the joint of the power cable and FlexoLED. Using a heat gun gently apply heat until the shrink tube shrinks into place over the connection to form a water tight seal.
 - Apply the end cap to your FlexoLED by adding glue into the end cap and firmly pushing onto the end of your FlexoLED.
-
-

Installation instructions

- 4, To join or extend your FlexoLED together using the various connectors, see diagram 1.
- Slide the heat-shrink tube over one of the FlexoLED lengths to be joined.
 - Insert one side of the connector into one end of the FlexoLED making sure that the “+” and “-” are connected to the pins correctly.
 - Apply glue around the surface of the ends of the FlexoLED and joints, next push the additional length of FlexoLED onto the pins of the connector. Apply glue to the inside of the heat-shrink tube and slide it over to cover the joints. Using a heat gun gently apply heat until the shrink tube shrinks into place over the connections.

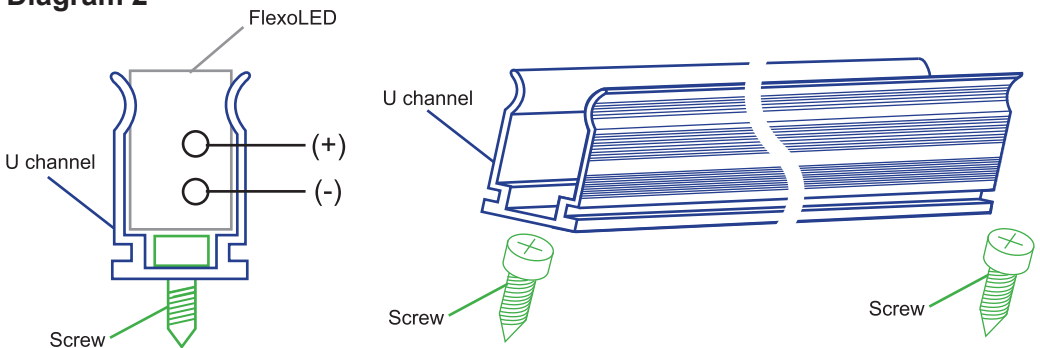
Note: The glue must make contact with all surfaces of the joints and ensure that the heat-shrink tube completely covers the whole joint to achieve IP-68 water-proof rating.

Diagram 1



- 5, The FlexoLED can be mounted using the Aluminium U-channel.

Diagram 2

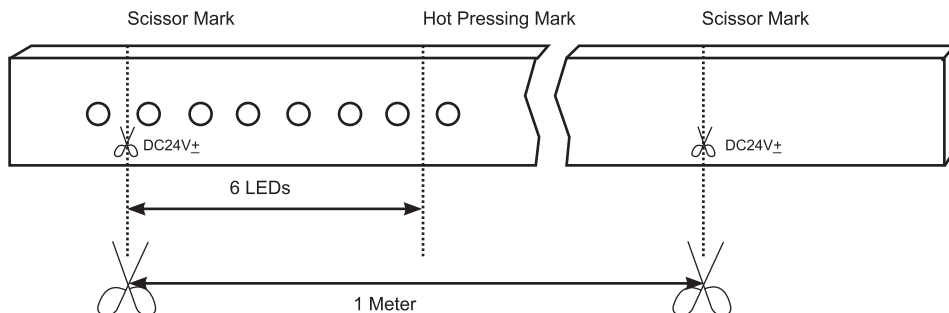


Installation

Installation instructions

6, The FlexoLED can be cut per 6 LEDs per unit at the “HOT PRESSING MARK”, or per meter at the printed “SCISSOR MARK” see diagram 3.

Diagram 3



7, Now connect the FlexoLED to a DC 24V power supply, ensuring that the polarity is correct.

Note: Brown “+”, Blue “-” of the front connector.

Please also note the instructions of DC 24V power supply as well.

Specifications

FlexoLED F05 Red, Green, Blue and Yellow

Power Supply	DC 24V
Power Consumption	5W/mtr
Min cutting length	8.3cm
SMD LED	72 LEDs/mtr
Dimensions	9 x 15mm

FlexoLED F05 Cool white

Power Supply	DC 24V
Power Consumption	5W/mtr
Min cutting length	7.7cm
SMD LED	78 LEDs/mtr
Dimensions	9 x 15mm

FlexoLED F07 Red, Green, Blue and Yellow

Power Supply	DC 24V
Power Consumption	5W/mtr
Min cutting length	8.3cm
SMD LED	72 LEDs/mtr
Dimensions	16 x 13 x 25mm

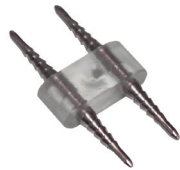
FlexoLED F07 Cool white

Power Supply	DC 24V
Power Consumption	5W/mtr
Min cutting length	8.3cm
SMD LED	72 LEDs/mtr
Dimensions	16 x 13 x 25mm

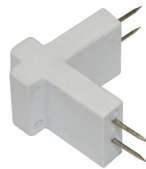
F07 Accessories



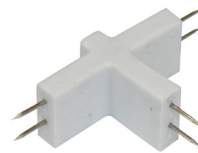
Power cable
Code: FLEX07FC



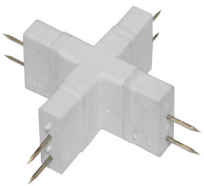
Extension connector
Code: FLEX07MC



2 Way L Connector
Code: FLEX07LC



3 Way T Connector
Code: FLEX07TC



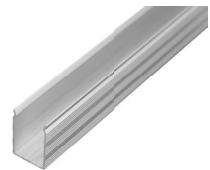
4 Way + Connector
Code: FLEX07+C



Heat shrink tube
Code: FLEX07HST



End cap
Code: FLEX07EC



U Channel 1M
Code: FLEX07ACH1M

F05 Accessories



Power cable
Code: FLEX05FC



Extension connector
Code: FLEX05MC



Heat shrink tube
Code: FLEX05HST



End cap
Code: FLEX05EC

F05/07 Power Accessories



U Channel 1M
Code: FLEX05ACH1M



PSU-100-24 DC Adaptor
Code: LEDC231



PSU-50-24 DC Adaptor
Code: LEDC230



FLEXOLED

www.prolight.co.uk

